



FARADAY COPPER

# Growing U.S. Copper Resources

CORPORATE PRESENTATION  
May 2024

FDY: TSX | CPPKF: OTCQX

**LUNDIN**GROUP  
A Lundin Group Company

# CAUTIONARY STATEMENT



Some of the statements in this presentation, other than statements of historical fact, are “forward-looking statements” and are based on the opinions and estimates of management as of the date such statements are made and are necessarily based on estimates and assumptions that are inherently subject to known and unknown risks, uncertainties and other factors that may cause actual results, level of activity, performance or achievements of Faraday Copper Corp. (“Faraday Copper” or “Faraday” or “The Company”) to be materially different from those expressed or implied by such forward-looking statements. Forward-looking statements and information may be identified by such terms as “anticipates”, “believes”, “targets”, “estimates”, “plans”, “expects”, “may”, “will”, “could” or “would”. Although Faraday Copper believes the expectations expressed in such forward-looking statements are based on reasonable assumptions, such statements should not be in any way construed as guarantees of future performance and actual results or developments may differ materially. Accordingly, readers should not place undue reliance on forward-looking statements or information. The Company does not undertake to update any forward-looking statements or information except as may be required by applicable securities laws.

Factors that could cause actual results to differ materially from those in forward-looking statements include without limitation: market prices for metals; the conclusions of detailed feasibility and technical analyses; lower than expected grades and quantities of resources; receipt of regulatory approval; mining rates and recovery rates; significant capital requirements; price volatility in the spot and forward markets for commodities; fluctuations in rates of exchange; taxation; controls, regulations and political or economic developments in the countries in which Faraday does or may carry on business; the speculative nature of mineral exploration and development, competition; loss of key employees; rising costs of labour, supplies, fuel and equipment; actual results of current exploration or reclamation activities; accidents; labour disputes; defective title to mineral claims or property or contests over claims to mineral properties; unexpected delays and costs inherent to consulting and accommodating rights of Indigenous peoples and other groups; risks, uncertainties and unanticipated delays associated with obtaining and maintaining necessary licenses, permits and authorizations and complying with permitting requirements, including those associated with the Copper Creek property; and uncertainties with respect to any future acquisitions by Faraday. In addition, there are risks and hazards associated with the business of mineral exploration, development and mining, including environmental events and hazards, industrial accidents, unusual or unexpected formations, pressures, cave-ins, flooding and the risk of inadequate insurance or inability to obtain insurance to cover these risks as well as “Risk Factors” included in Faraday’s disclosure documents filed on and available at [www.sedarplus.ca](http://www.sedarplus.ca).

The metrics presented in this presentation are based on a PEA that includes an economic analysis of the potential viability of Mineral Resources. Mineral Resources that are not Mineral Reserves do not have demonstrated economic viability. This PEA is preliminary in nature, includes Inferred Mineral Resources that are considered too speculative geologically to have the economic considerations applied to them that would enable them to be categorized as Mineral Reserves, and there is no certainty the PEA will be realized.

This presentation makes reference to certain non-IFRS measures including production cash costs and all-in sustaining costs (“AISC”). These measures are not recognized under IFRS, do not have a standardized meaning prescribed by IFRS and therefore may not be comparable to similar measures presented by other issuers; however, Faraday believes that these measures are useful to assist readers in evaluating the total costs of producing copper from their operations. While there is no standardized meaning across the industry for this measure, the Company defines production cash costs as based on the direct operating costs, including mining, processing, and G&A, offsite charges, net of by-product credits. By-product credits are calculated using commodity prices: \$13.00 per pound of molybdenum and \$20.00 per ounce of silver. AISC is the sum of the production cash costs, sustaining capital expenditures and royalties.

This presentation does not constitute an offer to sell or a solicitation of an offer to buy any securities in any jurisdiction to any person to whom it is unlawful to make such an offer or solicitation in such jurisdiction. This presentation is not, and under no circumstances is to be construed as, a prospectus, an offering memorandum, an advertisement or a public offering of securities in Faraday Copper in Canada, the United States or any other jurisdiction. No securities commission or similar authority in Canada or in the United States has reviewed or in any way passed upon this presentation, and any representation to the contrary is an offence.

All of the forward-looking statements contained in this presentation are qualified by these cautionary statements. Faraday Copper does not intend, and does not assume any obligation, to update these forward-looking statements, except as required under applicable securities legislation. For more information on Faraday Copper, readers should refer to [www.sedarplus.ca](http://www.sedarplus.ca) for the Faraday Copper’s filings with the Canadian securities regulatory authorities.

Technical information in this presentation has been reviewed and approved by Thomas Bissig, Professional Geologist, VP Exploration of the Company and Zach Allwright, Professional Engineer, VP Projects and Evaluations of the Company, both a “Qualified Person” as defined under National Instrument 43-101 - Standards of Disclosure for Mineral Projects (“NI 43-101”). Both have verified the data contained herein (where possible) which included a review of the sampling analytical and test methods underlying the data, information and opinions disclosed herein.

All amounts are in U.S. dollars unless otherwise stated.



# INVESTMENT HIGHLIGHTS



## Significant Resource Growth Through New Discoveries

- **Copper Creek is a large Cu-Mo-Ag resource** with over 4.2 Blbs of copper M&I Mineral Resource backstopped by a robust PEA
- **High-grade near surface breccia mineralization and vein stockwork porphyry at depth**
- **Exploration upside** with ongoing drilling and a portfolio of untested targets
- **Targeting enhanced project economics** through improved metallurgy, inclusion of gold and study optimization



Notes: The Mineral Resource Estimate (“MRE”) and Preliminary Economic Assessment (“PEA”) for the Copper Creek project were published in a news release dated May 3, 2023 were reported in a technical report titled “Copper Creek Project NI 43-101 Technical Report and Preliminary Economic Assessment” with an effective date of May 3, 2023 available on the Company’s website at [www.faradaycopper.com](http://www.faradaycopper.com) and on the Company’s SEDAR+ profile at [www.sedarplus.ca](http://www.sedarplus.ca). For the complete MRE tables and related notes refer to the relevant slides at the end of this presentation.

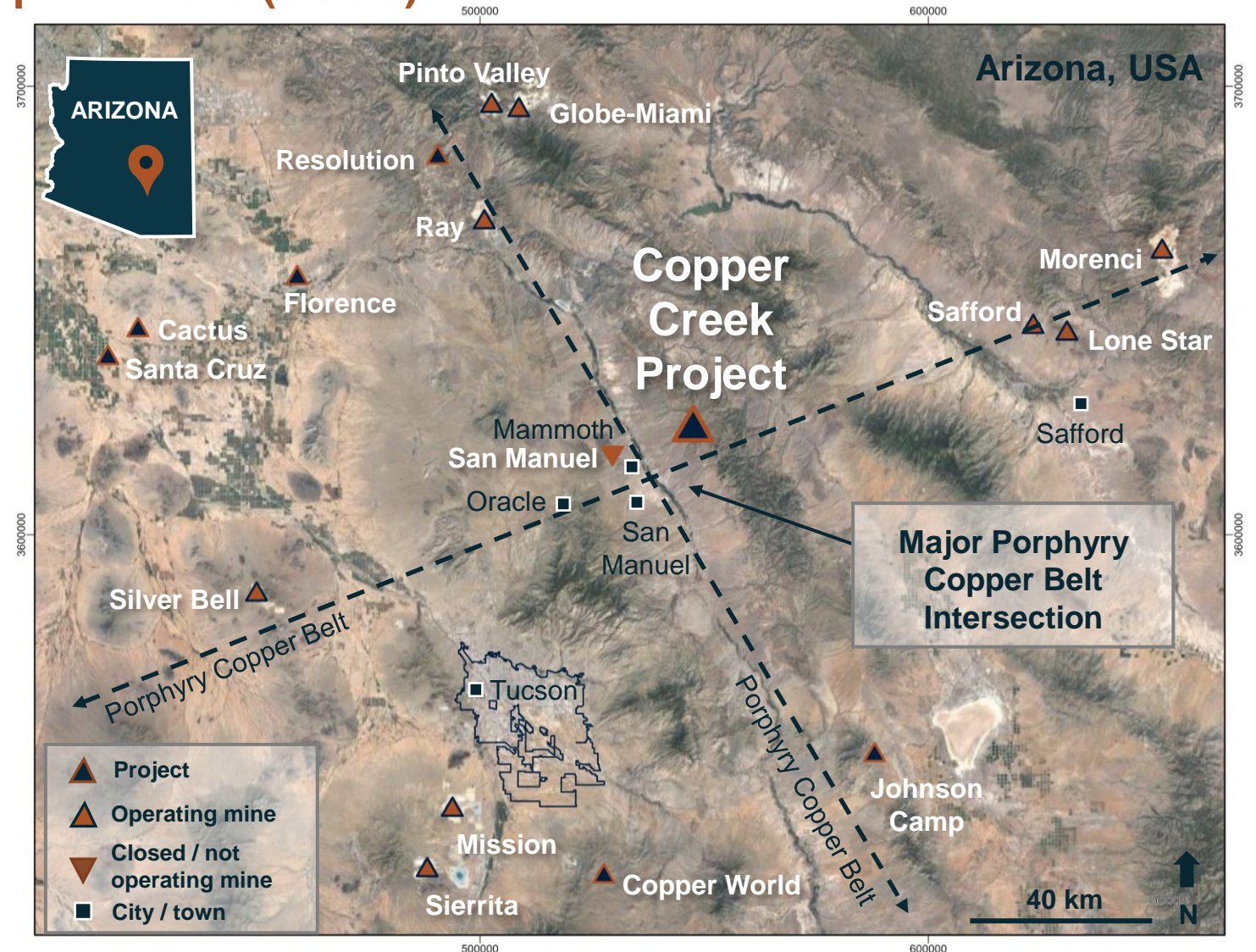


# COPPER CREEK IS IN A TOP MINING JURISDICTION



Arizona Produced ~70% of U.S. Copper in 2023 (USGS)

- **100% owned property** in Pinal County, Arizona
- **Near mining and service hubs** with skilled labour:  
~80 road km northeast of Tucson  
~25 road km northeast of San Manuel
- **Excellent infrastructure** with access to road, rail and renewable power
- **Two smelters in the region:**  
Hayden (Asarco) & Miami (Freeport)



# CORPORATE OVERVIEW



## Analyst Coverage



Dalton Baretto



Connor Mackay



Arun Lamba

## Financial Overview

**C\$120.1 M** Market Capitalization

**C\$40.0 M** Financing (Feb 14, 2023)

**C\$8.8 M** Cash & Equivalents (Mar 31, 2024)

**176.6 M** Shares Outstanding

**11.4 M** Options

**12.5 M** Warrants

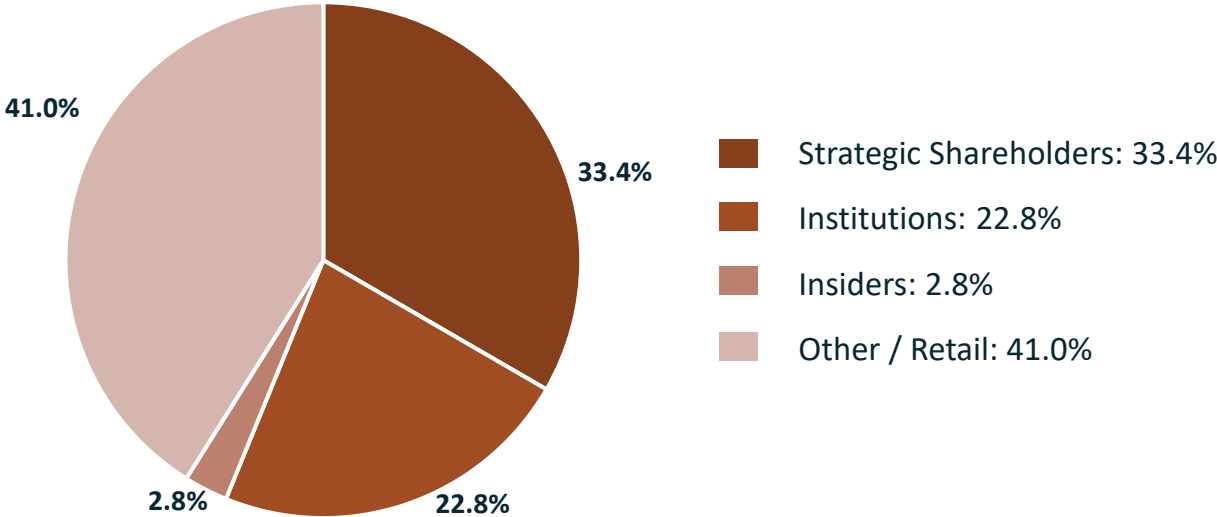
**4.9 M** Restricted Share Units

## Top Strategic Shareholders

**Lundin Family**

**Murray Edwards      Pierre Lassonde**

## Ownership



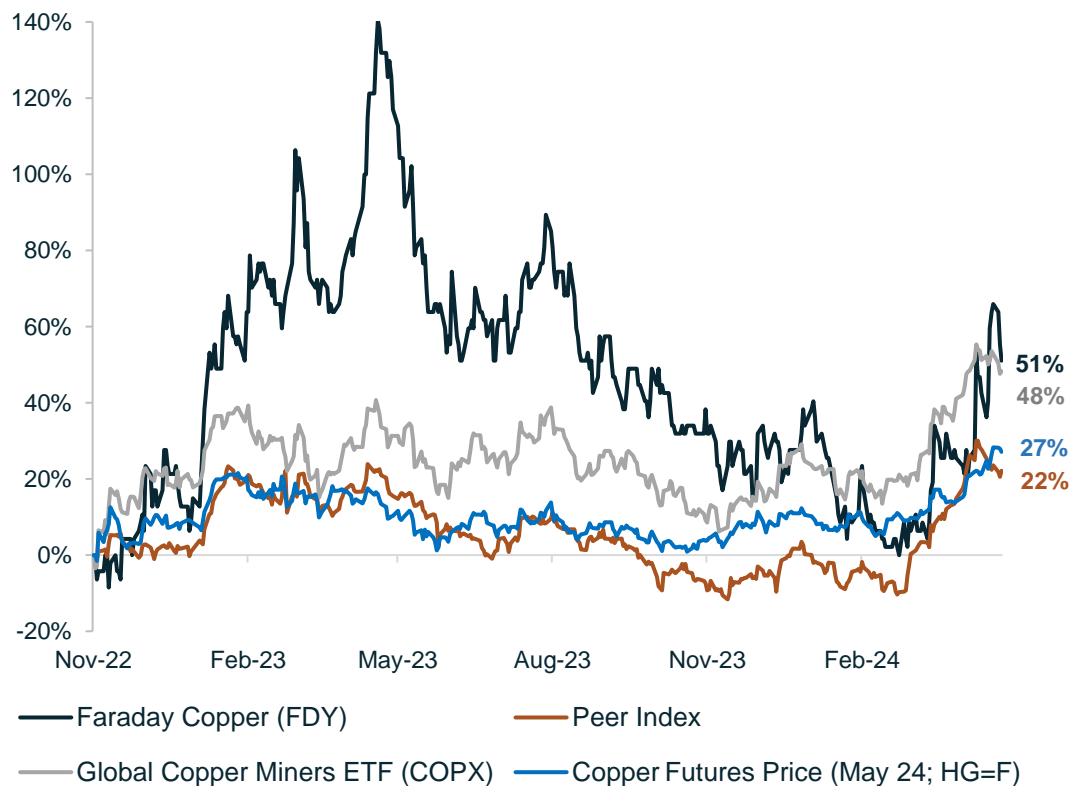
Notes: Market Capitalization as of May 2, 2024. Shares Outstanding, Options, Warrants, and Restricted Share Units as of May 2, 2024. Ownership as of February 14, 2023. Each warrant entitles the holder to purchase one common share at an exercise price of \$0.60 at any time up to September 2026.

# COMPELLING INVESTMENT

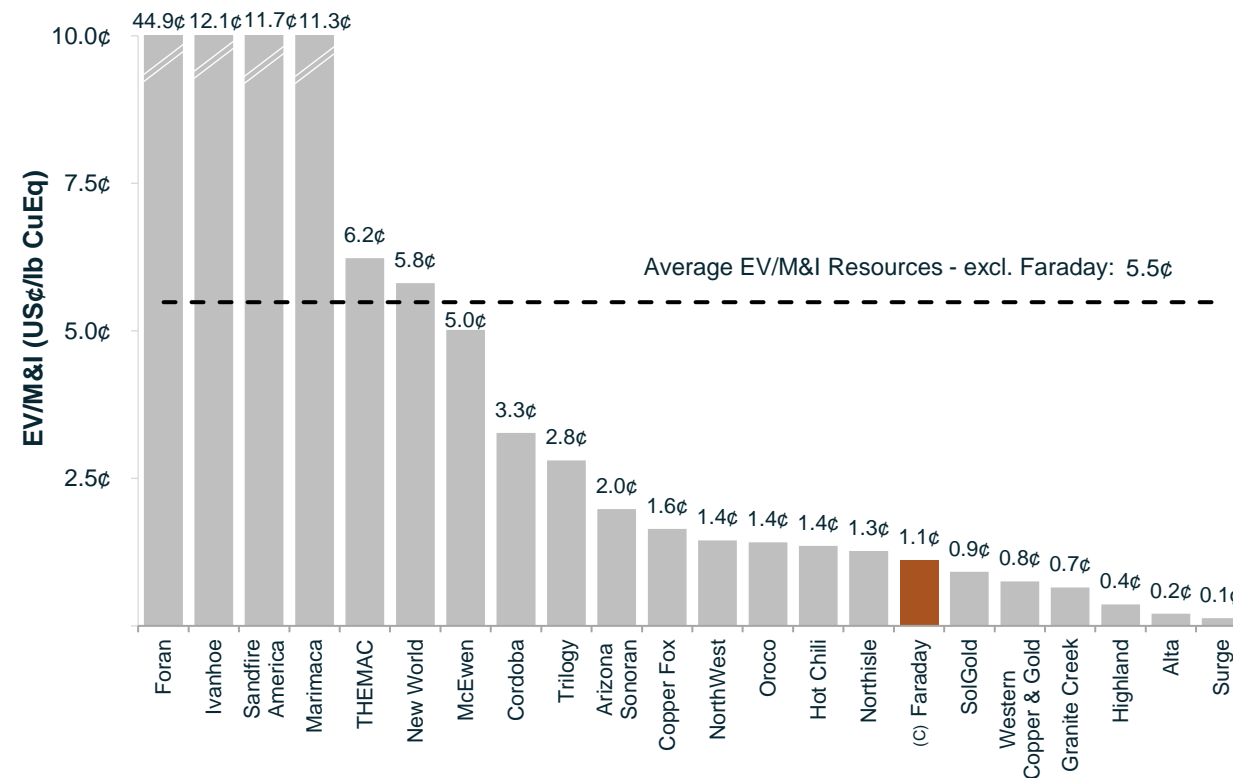
## Undervalued Mineral Resource Compared to Peers



Relative Price Performance (a)



Enterprise Value / M&I Mineral Resources (b)



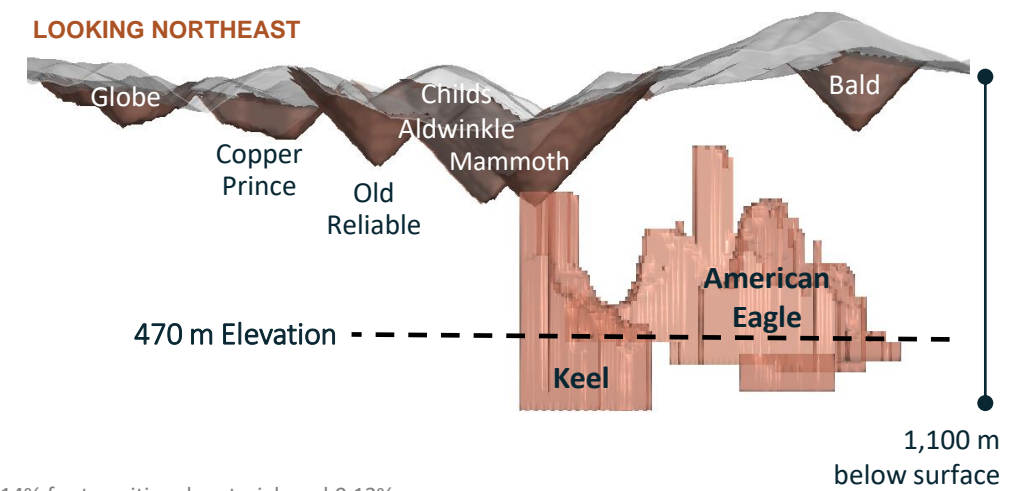
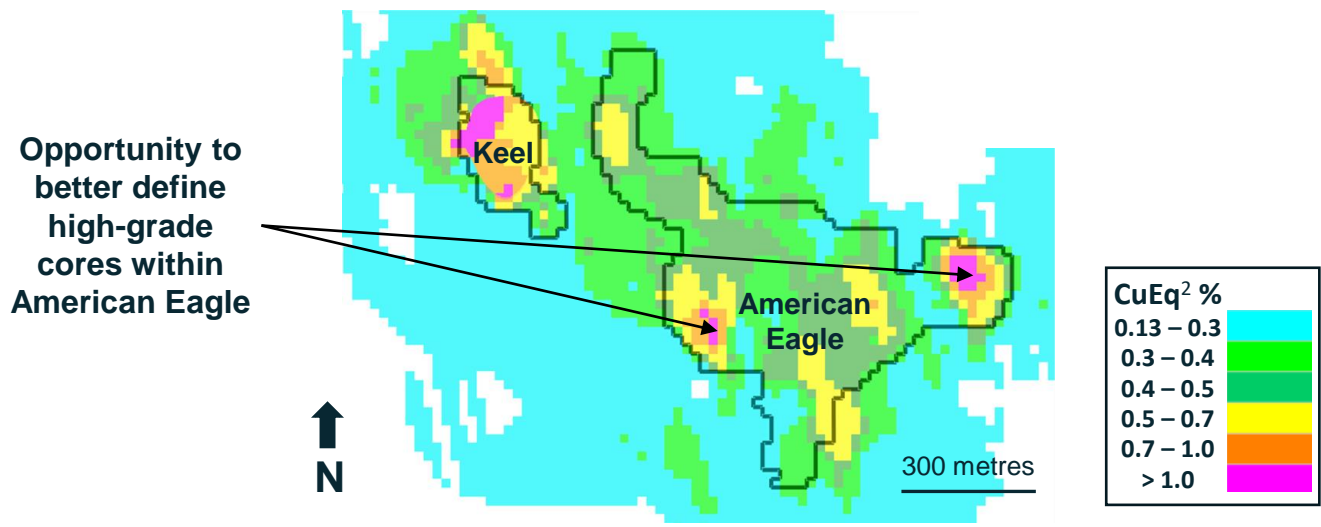
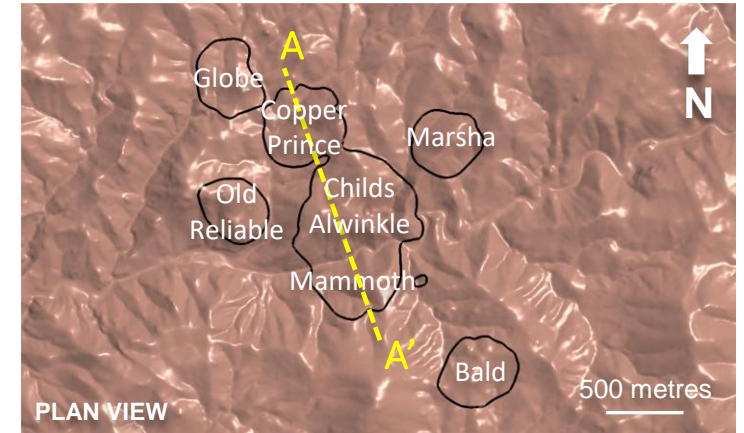
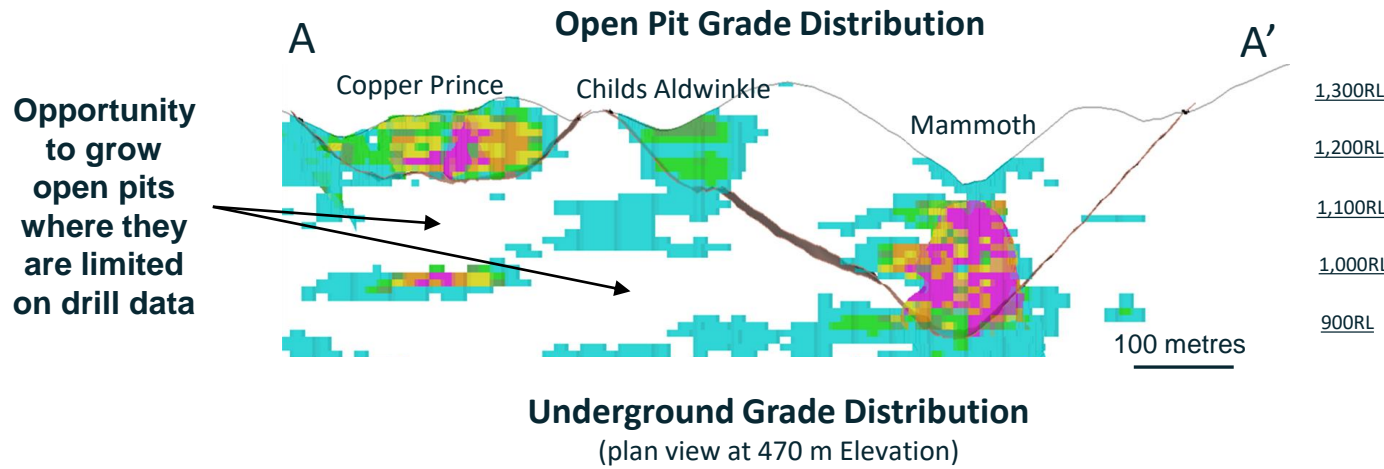
Notes:

- a) Includes Peers presented on the "Enterprise Value" chart. As at April 24, 2024.
- b) Source: Company disclosure, S&P Capital IQ and S&P Capital IQ Pro as at February 20, 2024. Copper equivalent ("CuEq") figures are based on applicable prices utilized in the Copper Creek PEA of \$3.80/lb Cu, \$20.00/oz Ag, and \$13.00/lb Mo, and consensus long-term commodity prices of \$1,750/oz Au, \$0.90/lb Pb and \$1.25/lb Zn.
- c) Faraday Copper's figure excludes the Contact Copper project as the Mineral Resource is deemed to be historical.



# RESOURCE OPTIMIZATION

## Significant Upside to the 4.2 Blbs of Copper M&I Mineral Resource

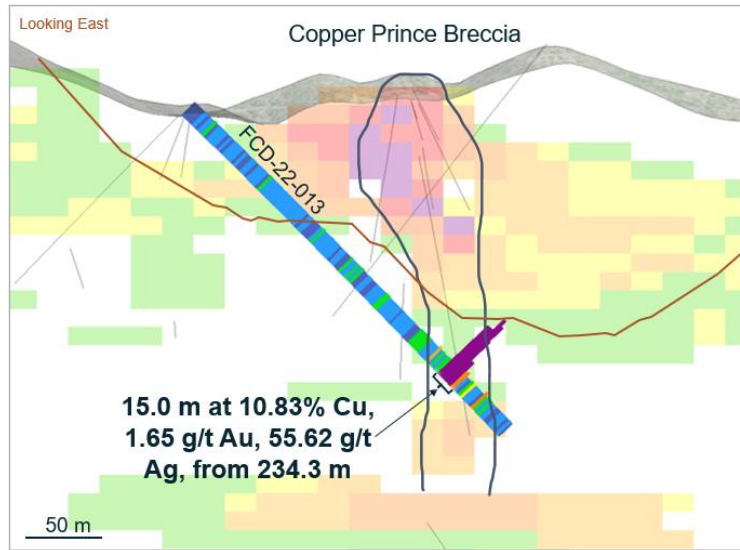


Note: The images above reflect conceptual open pit shells constrained with RPEEE at CuEq<sup>2</sup> cut-off grades of 0.13% for oxide material, 0.14% for transitional material, and 0.13% for sulphide material. Underground footprints constrained with RPEEE are stated as contained within estimation domains above 0.31% CuEq<sup>2</sup> cut-off grades. These were utilized as the resource constraining volumes in the 2023 MRE disclosed in a news release dated May 3, 2023. The potential grade and scale of the open pit and underground inventory is conceptual in nature. There has been insufficient technical analysis to define the open pit and underground inventory as economically viable inventory or mineable reserve.

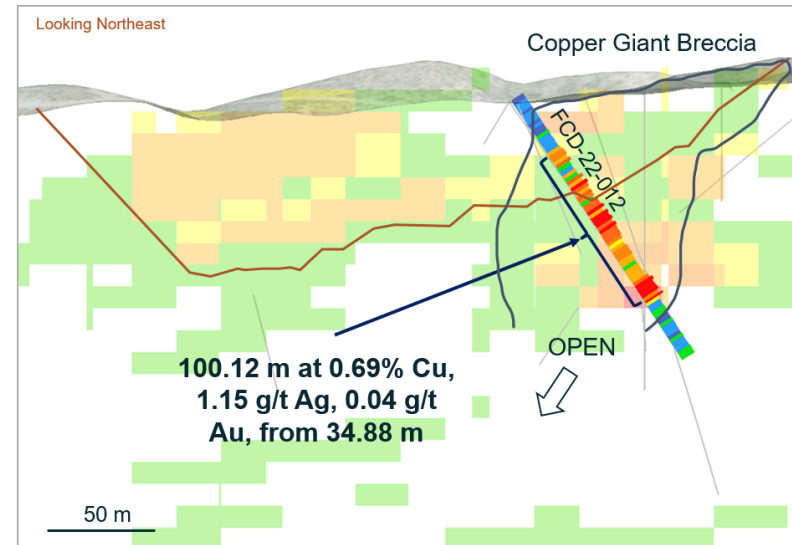
# PHASE II RESULTS SHOW UPSIDE (POST-MRE)



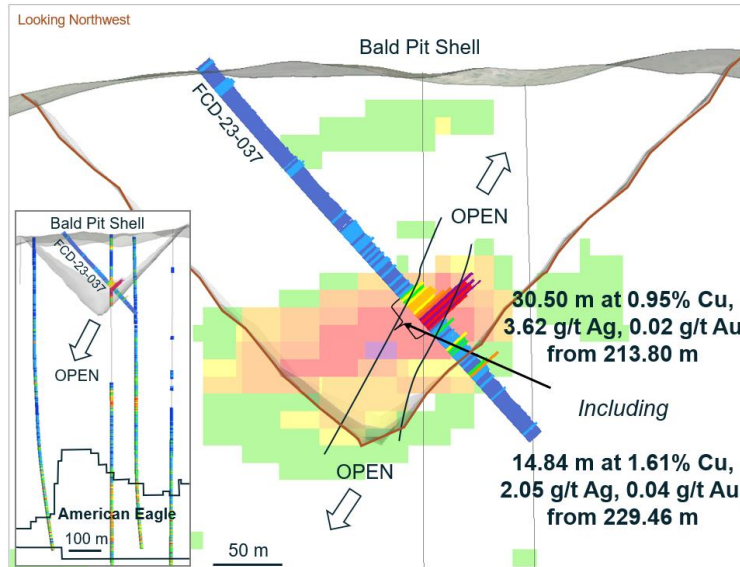
High-grade intercept below Copper Prince



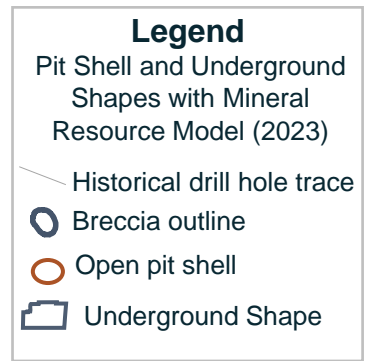
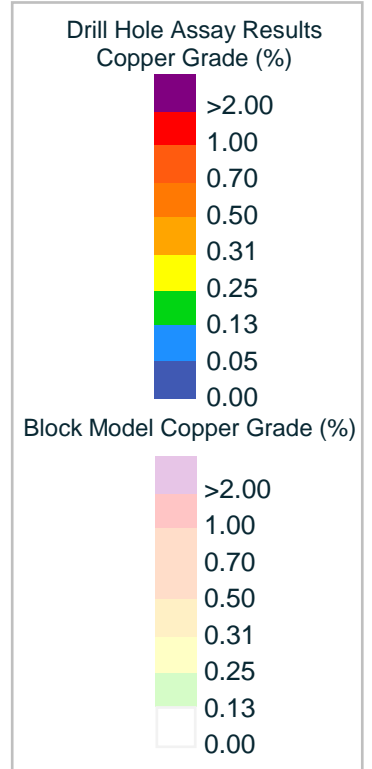
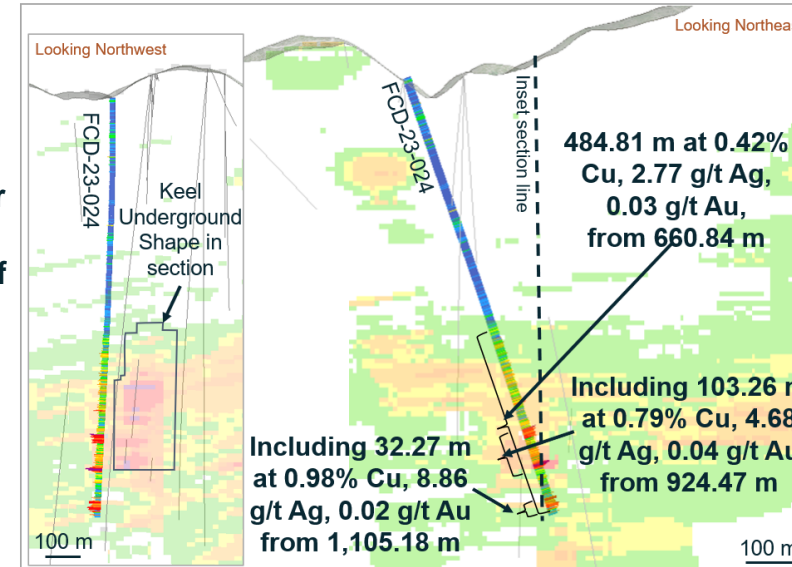
High-grade intercept below Copper Giant



Potential for expansion above American Eagle underground



Potential for westerly extension of Keel



Note: For further details refer to the Company's news releases dated January 17, 2023, March 14, 2023, May 31, 2023 and August 1, 2023.



# 2024 METALLURGICAL RESULTS

## Unlocking Significant Upside



### Coarse Grind Optimization

Over 95% copper sulphide recovery

Grind energy significantly reduced

Unlocks processing scalability and operating cost reduction

### Additional Benefits

Gold recovery over 75% supporting potential to add gold to the resource

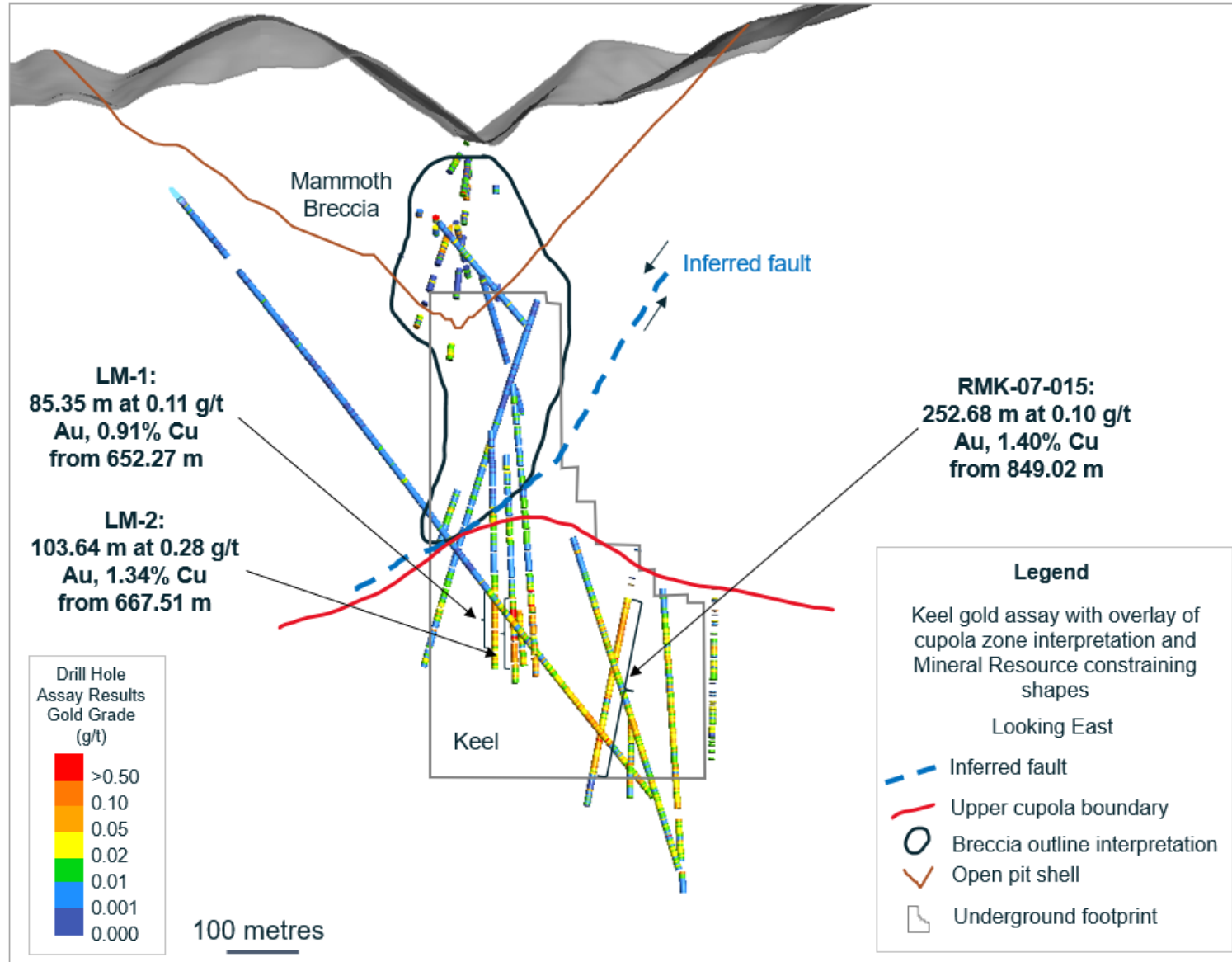
Oxide copper recovery improved significantly

Copper concentrate quality consistently high (over 30% copper)



Photo of drill core from drill hole FDC-22-013 at the Copper Prince breccia.

# GOLD PROGRAM RESULTS: KEEL (POST-MRE)



## Gold Program

- Assaying historical material for gold, that was not previously tested, for potential inclusion in future studies

## Keel Results

- Doubled assay coverage with 1,017 new gold assay results in addition to 1,062 historical gold assay results
- Gold and copper are correlated on an intercept basis with an overall ratio of ~ 1:9 gold (g/t):copper (%)
- Metallurgical test work supports high gold recoveries exceeding 80% to a payable grade in the copper concentrate for Keel
- Assay results confirm historical data, providing additional confidence in the database

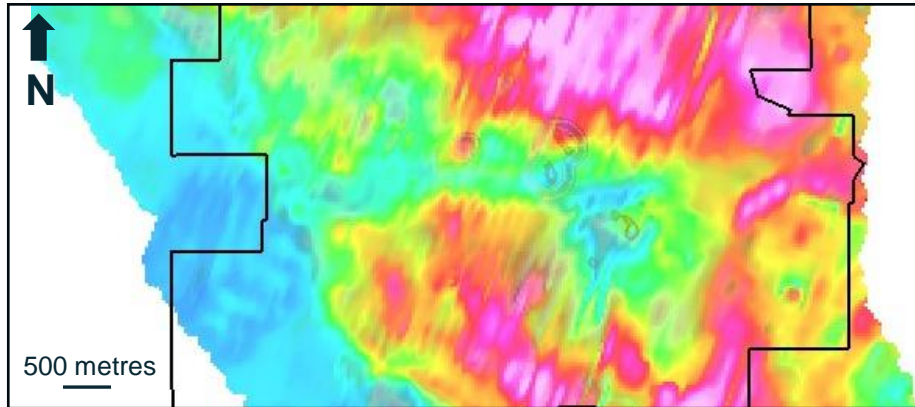


# EXPLORATION DATA LAYERS

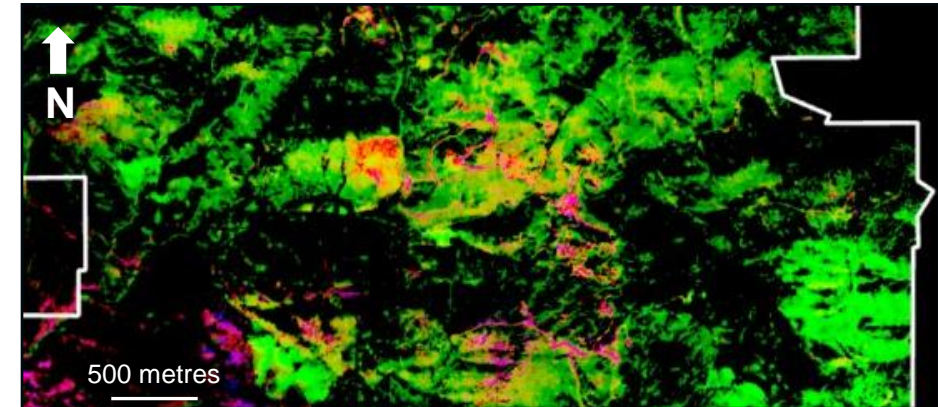
## New Empirical Data Informs Exploration Targeting



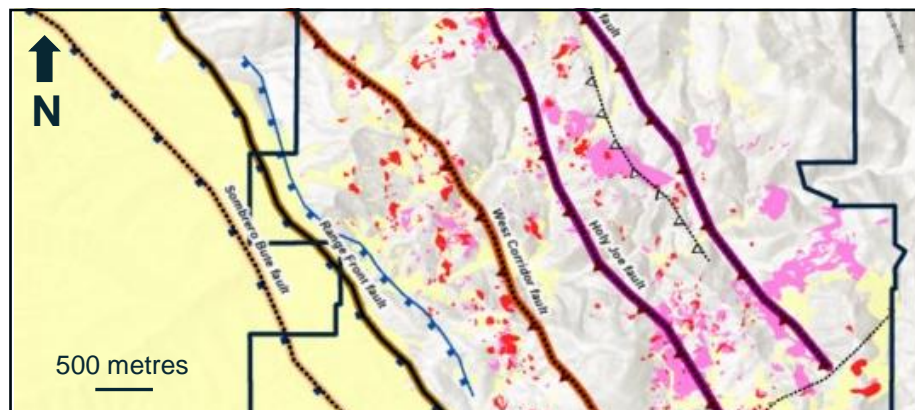
New Airborne Geophysical Survey (VTEM)



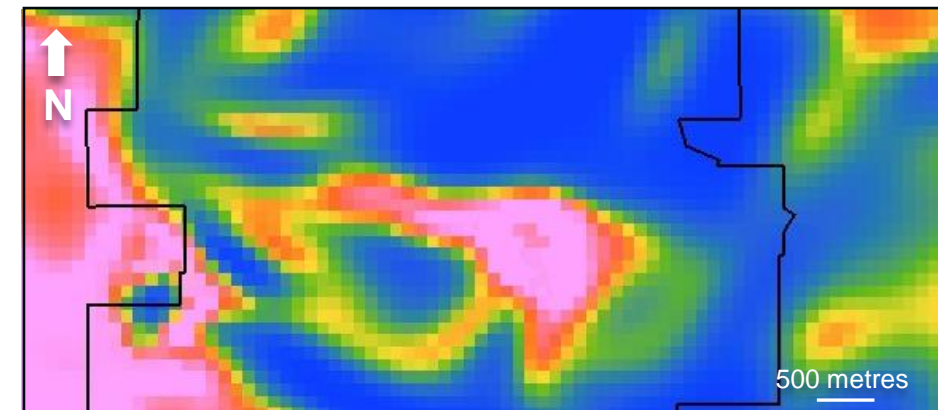
New Airborne Spectral Survey



New Structural Interpretation



New Geophysical Processing (ZTEM)

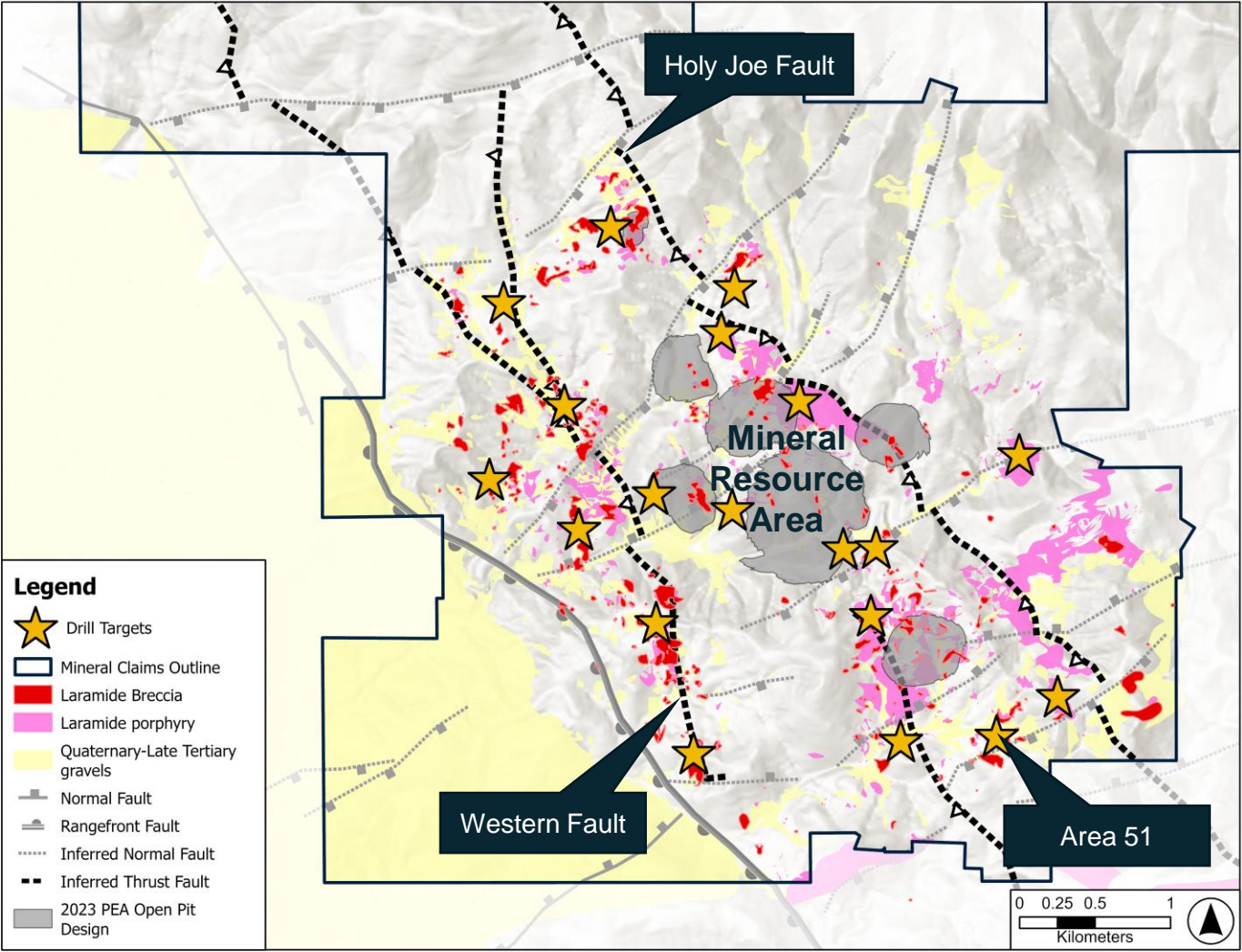


# POTENTIAL FOR NEW DISCOVERIES

Significant Growth Opportunities in an Underexplored District



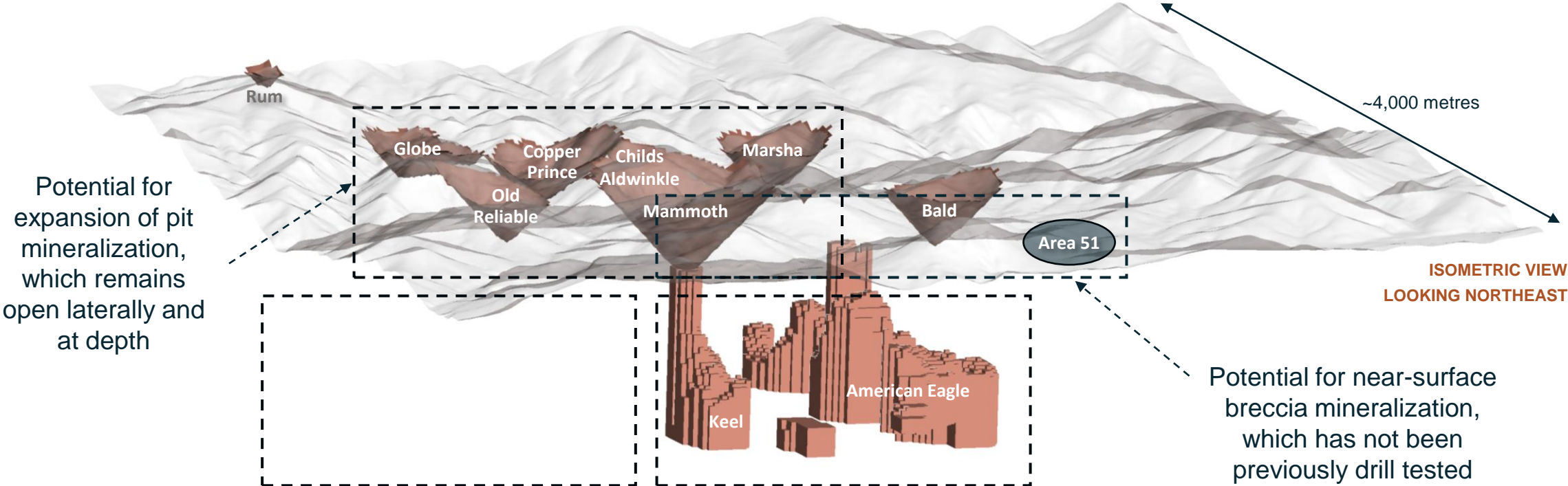
**33 high priority targets across the property**





# RESOURCE EXPANSION POTENTIAL

## Significant Growth Opportunities



Potential for expansion of pit mineralization, which remains open laterally and at depth

Potential for underground porphyry feeder system, which has not been previously drill tested

Potential to delineate further high-grade centers with angled drill holes

Potential for near-surface breccia mineralization, which has not been previously drill tested

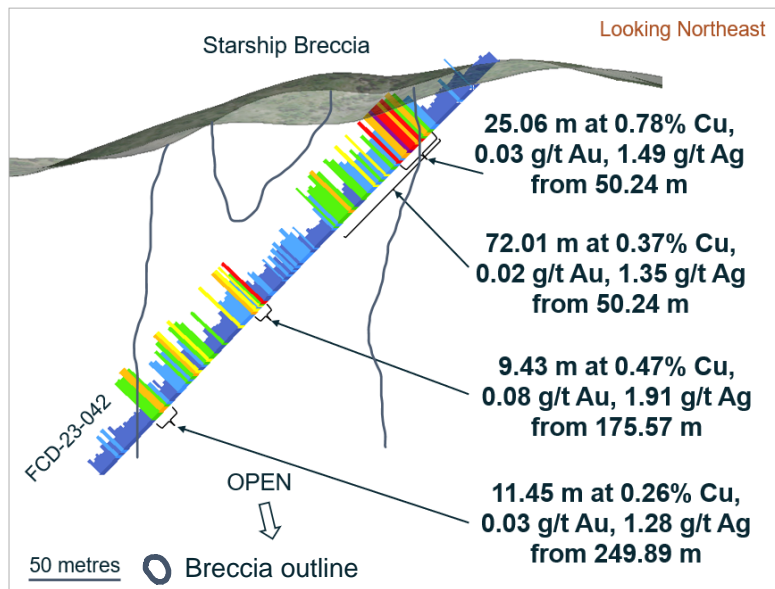
2023 Mineral Resource Constraining Shapes

- Open Pit Shells
- Underground Footprint
- Topography

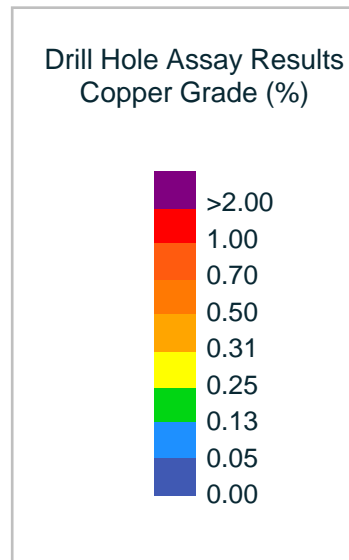
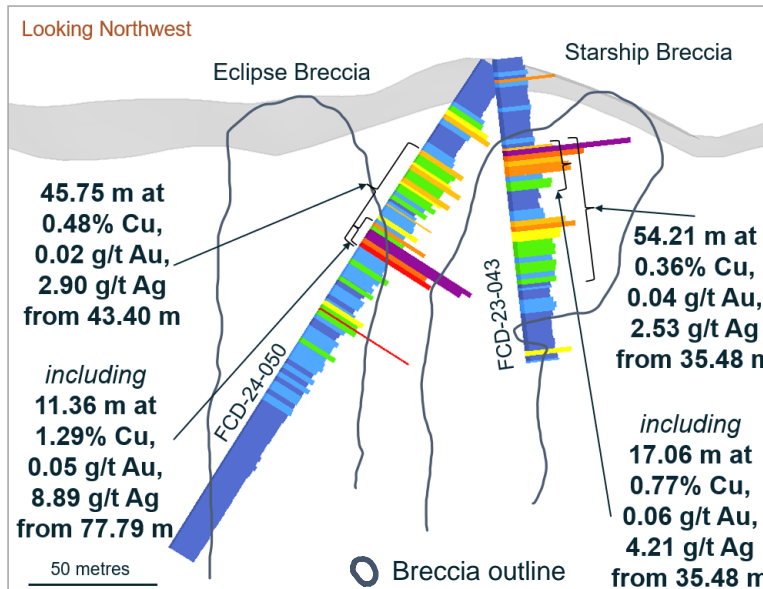
# PHASE III RESULTS: NEW DISCOVERY AT AREA 51



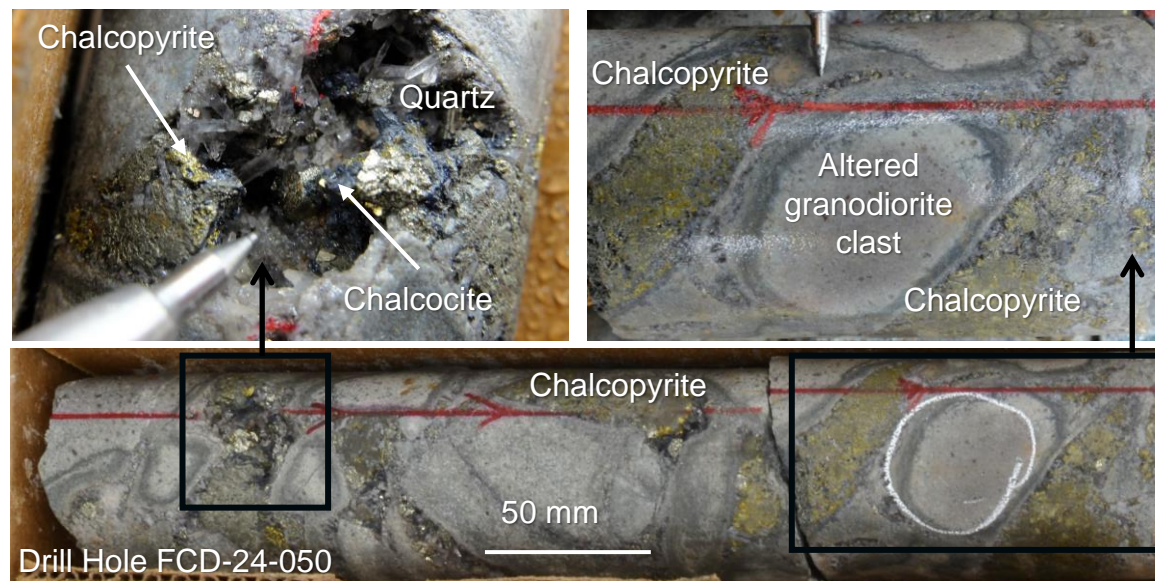
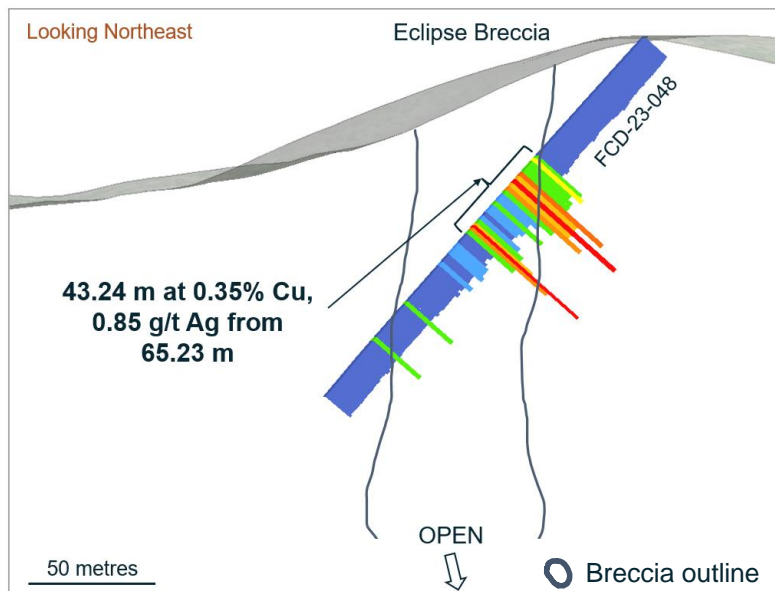
Discovery hole at previously undrilled breccia



Potential to increase open pit mineral resource with mineralization open laterally and at depth



Second breccia with near surface mineralization confirms potential at Area 51

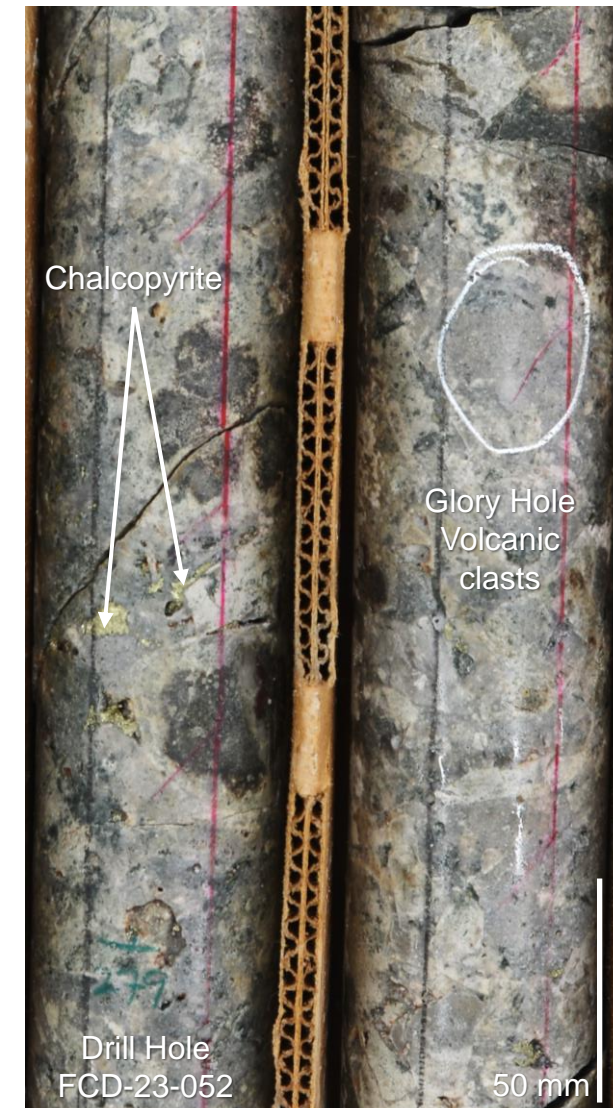
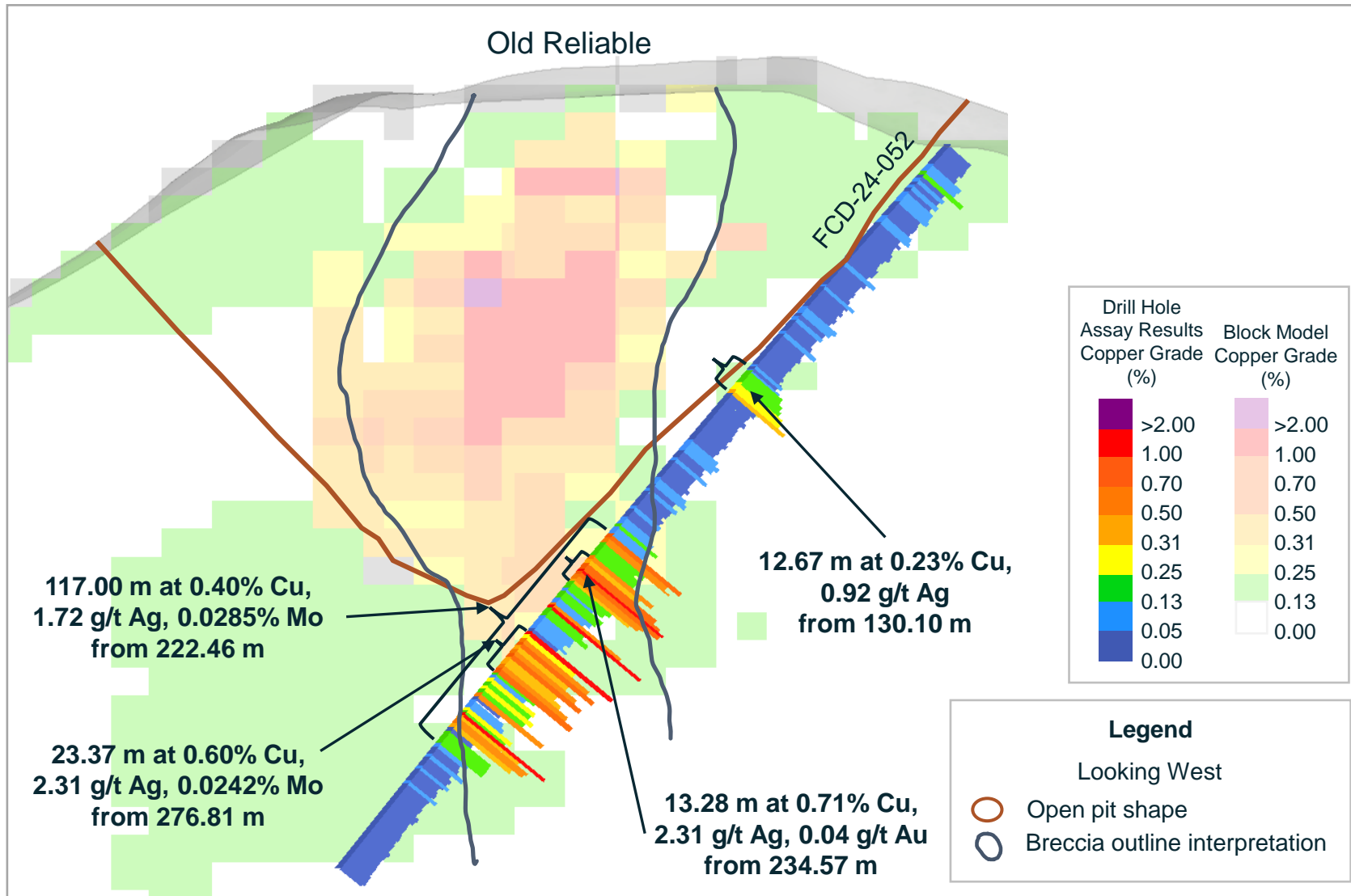


Note: For further details refer to the Company's news releases dated January 16, 2024, March 4, 2024, and April 10, 2024.



# PHASE III DRILL RESULTS

## Mineralization at Old Reliable Remains Open for Expansion

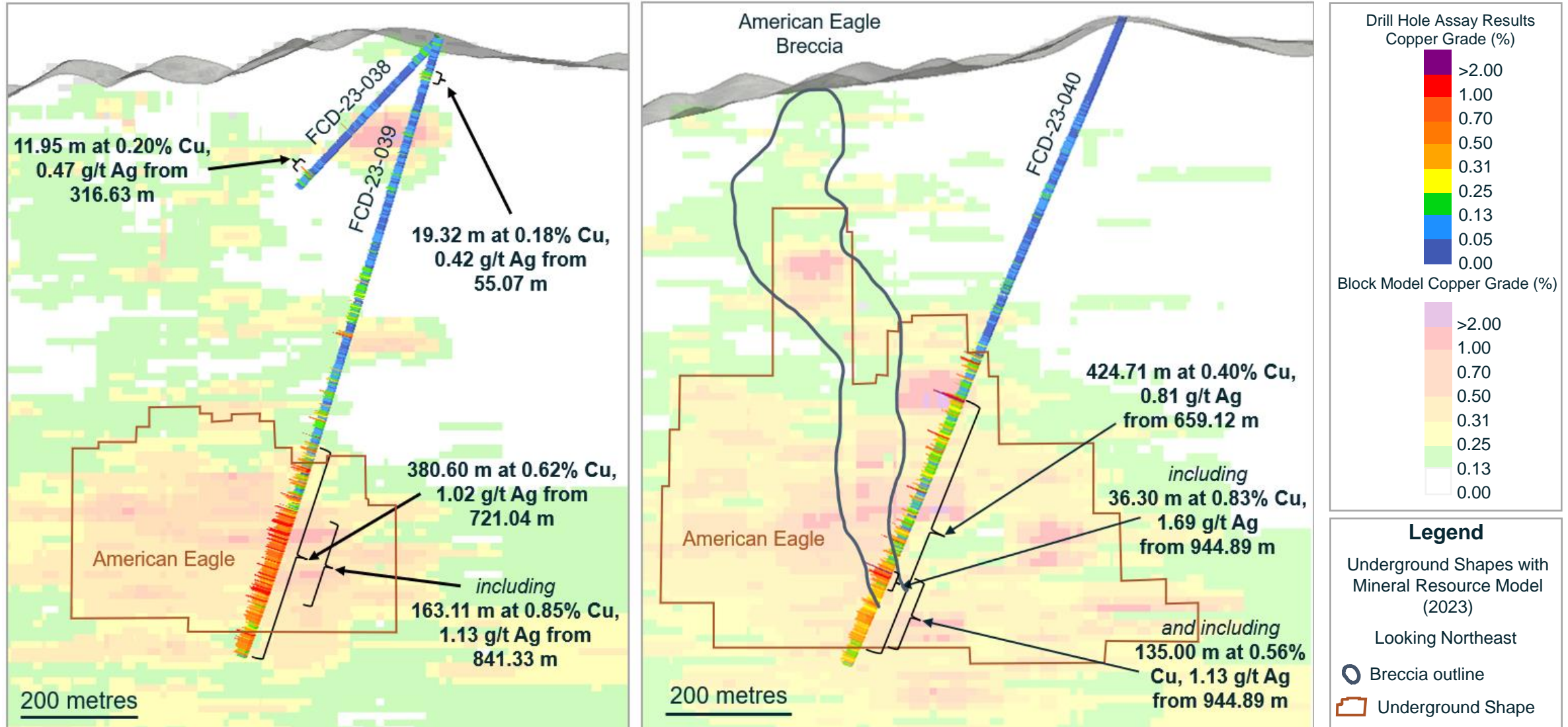


Note: For further details refer to the Company's news release dated April 10, 2024.

# PHASE III DRILL RESULTS



## Higher Grade Zones at American Eagle are Open for Expansion



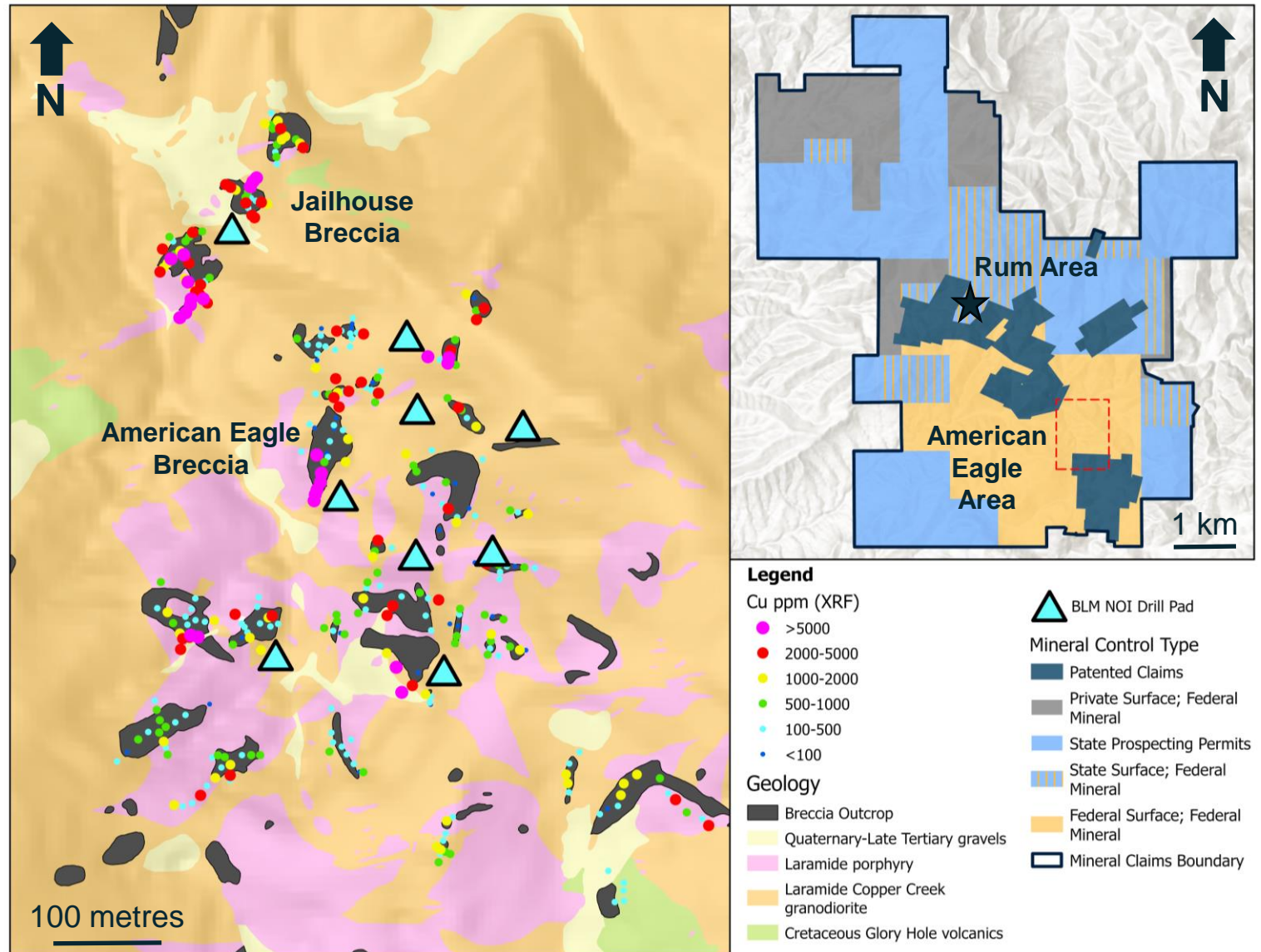
Note: For further details refer to the Company's news release dated February 21, 2024.



# DRILLING AT AMERICAN EAGLE AND RUM AREAS



- **Notice of Intent approval received** from the U.S. Bureau of Land Management in May 2024, facilitating the next portion of the Phase III drill program
- **American Eagle Area:** Targeting near-surface breccia hosted mineralization from nine high-priority drill pads
- **Rum Area:** Targeting porphyry hosted mineralization exposed at surface from two existing drill pads



Note: For further details refer to the Company's news release dated May 2, 2024.

# ENVIRONMENTAL & STAKEHOLDER ENGAGEMENT



## Baseline Data Collection and Stakeholder Outreach



### ENVIRONMENT

Baseline environmental monitoring systems in place for data collection to support permitting process

- Flow meters and piezometer installations
- Dry wells installed
- Water sampling and water elevation measurements
- Meteorological station
- Classification of waterways (404 Permit)
- Flora & fauna and archaeological & cultural studies



### STAKEHOLDER ENGAGEMENT

Commitment to open dialogue and support for the local economy and social programs

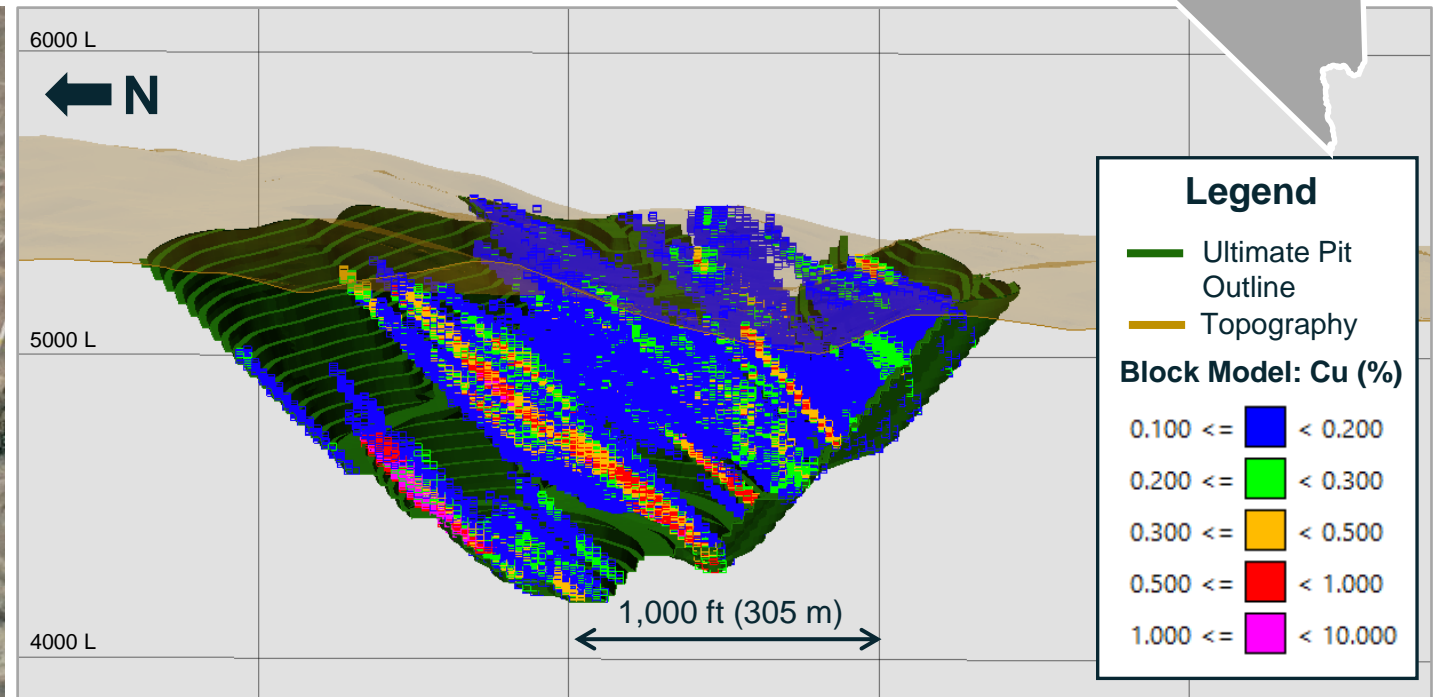
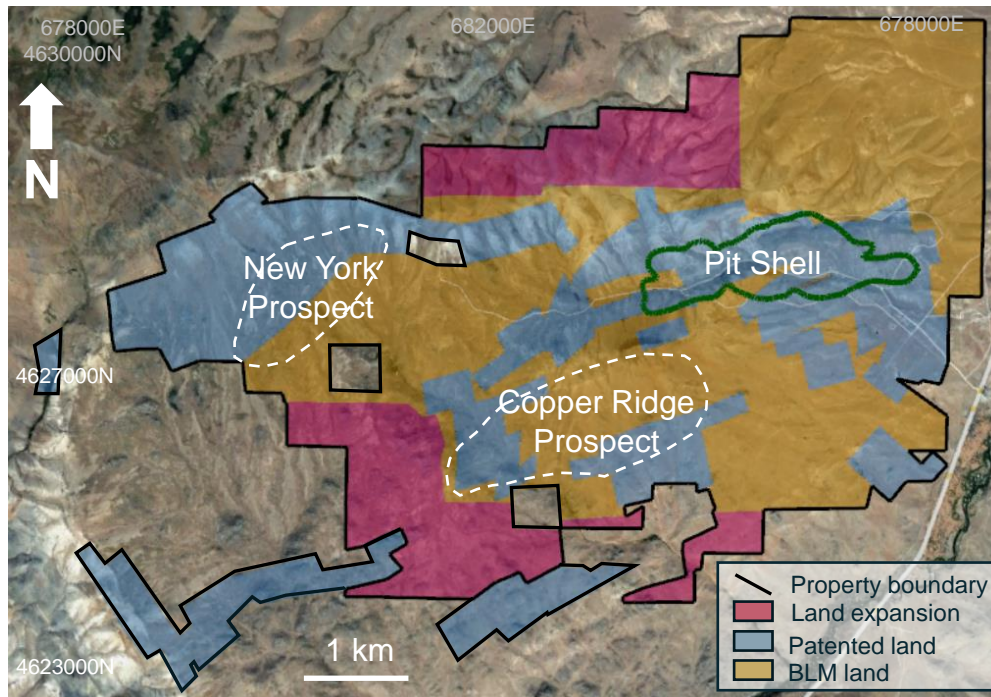
- Community meetings held with San Manuel, Mammoth and Oracle
- Outreach and site visits with Arizona's Native American Groups
- Proactive engagement with regulators including Bureau of Land Management, Arizona Game & Fish, U.S. Army Corps of Engineers and Arizona Department of Environmental Quality



# CONTACT COPPER PROJECT

## Copper Oxide Optionality

- 100% owned, 5,900+ acres of patented and unpatented mining claims in northern Nevada
- Excellent access to a major highway, power and local mining services
- Open pit, heap-leach copper oxide opportunity
- Deposit open in all directions with untested drill targets



Notes: Conceptual resource block model section from historical data presented in a technical report titled "NI 43-101 Pre-Feasibility Study on the Contact Copper Project" prepared for International Enxco, Ltd. by Hard Rock Consulting, LLC dated and filed by International Enxco Ltd. on SEDAR on October 1, 2013.

# OPPORTUNITIES AND NEXT STEPS



## Phase II drill program

Demonstrates potential for resource expansion

## Gold potential

Targeting gold inclusion in future studies

## Phase III drill program

Focused on resource expansion and testing new targets

## Asset scalability

Metallurgical program supports coarser grind and tailings optimization

## Exploration pipeline

Underexplored district at Copper Creek and optionality at Contact Copper







FARADAY COPPER

# Contact Us

## CONTACT INFORMATION

Suite 2800, 1055 Dunsmuir Street  
PO Box 49225  
Vancouver, BC Canada  
[www.faradaycopper.com](http://www.faradaycopper.com)

## STACEY PAVLOVA, CFA

VP Investor Relations  
778-730-1067  
[info@faradaycopper.com](mailto:info@faradaycopper.com)





FARADAY COPPER

# Appendix





# BRINGING A SENIOR MINING COMPANY EXPERTISE

## Senior Mining Company Talent Who Know Great Projects



### Management



**Paul Harbidge**

President, CEO & Director

Prev: President & CEO of GT Gold, acquired by Newmont for \$456M, former SVP Exploration at Goldcorp and General Manager Exploration at Randgold Resources; Currently Director of Japan Gold



**Graham Richardson**  
Chief Financial Officer

Prev: Goldcorp / Newmont



**Dr. Thomas Bissig**  
VP Exploration

Prev: Goldcorp / Newmont



**Russell Ball**  
Chair

Prev: CEO, Calibre Mining; CFO, Goldcorp; CFO, Newmont; Currently Director of Ivanhoe Electric and Southern Silver Exploration



**Audra Walsh**

Prev. CEO, Minas de Aguas Tenidas (MATSA)



**Robert Doyle**

Prev. CFO, Pan American Silver



**Zach Allwright**

VP Projects & Evaluations  
Prev: Mining Plus Consulting



**Aaron Cohn**

VP & Country Manager, USA  
Prev: Ma'aden / Newmont



**Randy Engel**

Prev. EVP, Strategic Development, Newmont



**Arndt Brettschneider**

Currently VP Operations & Projects, Filo Mining



**Angela Johnson**

VP Corp Dev. & Sustainability  
Prev: SSR Mining, Calibre Mining



**Stacey Pavlova**

VP Investor Relations  
Prev: SSR Mining



**Katherine Arnold**

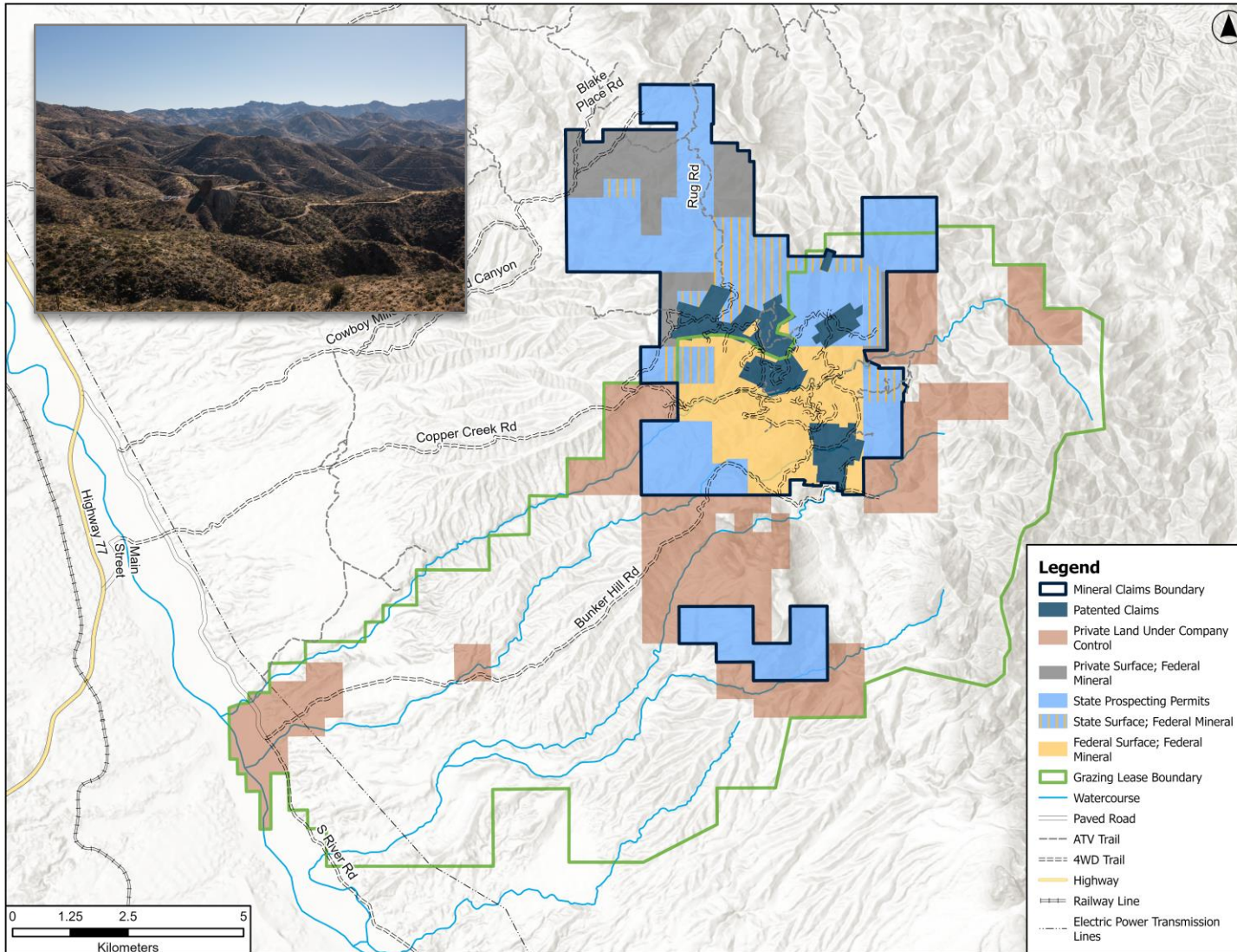
Prev. Director, Environment, Hubday



**Alan Wilson**

Prev. International Exploration Manager, Antofagasta

# COPPER CREEK: LARGE LAND PACKAGE



- ~73 km<sup>2</sup> Property offers strategic benefits
- Mineral claims include patented claims, unpatented claims and state prospecting permits
- Optionality for infrastructure placement
- Solar power generation potential
- Ranch includes ~26,000 acres of surface rights through active grazing leases



# COPPER CREEK: MINERAL RESOURCES (2023)



Category	Tonnes (Mt)	Grade				Contained Metal			
		Cu (%)	Mo (%)	Ag (g/t)	CuEq <sup>1</sup> (%)	Cu (Mlbs)	Mo (Mlbs)	Ag (Moz)	CuEq <sup>1</sup> (Mlbs)
<b><u>Open Pit (OP)</u></b>									
Measured	67.2	0.48	0.008	1.2	0.51	710.5	12.5	2.6	751.1
Indicated	59.9	0.31	0.008	0.6	0.33	412.9	10.1	1.1	440.5
<b>M&amp;I</b>	<b>127.1</b>	<b>0.40</b>	<b>0.008</b>	<b>0.9</b>	<b>0.43</b>	<b>1,123.4</b>	<b>22.6</b>	<b>3.8</b>	<b>1,191.6</b>
Inferred	48.1	0.28	0.006	0.5	0.30	298.4	6.4	0.7	316.0
<b><u>Underground (UG)</u></b>									
Measured	34.5	0.47	0.011	1.6	0.51	359.8	8.0	1.7	388.0
Indicated	260.3	0.47	0.008	1.2	0.50	2,720.6	43.9	10.0	2,876.8
<b>M&amp;I</b>	<b>294.8</b>	<b>0.47</b>	<b>0.008</b>	<b>1.2</b>	<b>0.50</b>	<b>3,080.4</b>	<b>52.0</b>	<b>11.8</b>	<b>3,264.8</b>
Inferred	35.5	0.42	0.009	0.8	0.45	<b>329.7</b>	<b>7.1</b>	<b>0.9</b>	<b>353.0</b>
<b><u>Total (OP + UG)</u></b>									
Measured	101.6	0.48	0.009	1.3	0.51	1,070.3	20.5	4.4	1,139.1
Indicated	320.2	0.44	0.008	1.1	0.47	3,133.5	54.0	11.2	3,317.3
<b>M&amp;I</b>	<b>421.9</b>	<b>0.45</b>	<b>0.008</b>	<b>1.1</b>	<b>0.48</b>	<b>4,203.8</b>	<b>74.6</b>	<b>15.5</b>	<b>4,456.4</b>
Inferred	83.6	0.34	0.007	0.6	0.36	628.2	13.4	1.7	669.0

Notes: Totals may not add due to rounding. The MRE for the Copper Creek project was published in a news release dated May 3, 2023. For the related notes refer to the relevant slide in the Appendix.

# COPPER CREEK: NOTES TO MINERAL RESOURCES



- CuEq: Copper equivalent; g/t: Grams per tonne; Mlb: Million pounds; Moz: Million troy ounces; Mt: Million tonnes
- The mineral resources in this estimate were prepared in accordance with the Canadian Institute of Mining, Metallurgy and Petroleum (CIM) Standards on Mineral Resources and Reserves, Definitions and Guidelines (CIM, 2014) prepared by the CIM Standing Committee on Reserve Definitions and adopted by CIM Council.
- Pit shell constrained resources with RPEEE are stated as contained within estimation domains defined by the following cut-off grades: 0.13% CuEq for oxide material, 0.14% CuEq for transitional material, and 0.13% CuEq for sulphide material. Pit shells are based on an assumed copper price of \$3.80/lb, assumed molybdenum price of \$13.00/lb, assumed silver price of \$20.00/troy ounce (oz), and overall slope angle of 47 degrees based on preliminary geotechnical data. Operating cost assumptions include open pit mining cost of \$2.25/t, processing cost of \$7.60/t for milling transitional and sulphide material, \$4.56/t for oxide processing, general and administrative (“G&A”) costs of \$1.00/t, and treatment charges and refining charges (“TCRC”) and freight costs dependent on product and material type.
- Underground constrained resources with RPEEE are stated as contained within estimation domains above 0.31% CuEq cut-off grade . Underground bulk mining footprints are based on an assumed copper price of \$3.80/lb, assumed molybdenum price of \$13.00/lb, assumed silver price of \$20.00/oz, underground mining cost of \$7.30/t, processing cost of \$7.60/t, G&A costs of \$1.00/t, and TCRC and freight costs of \$6.50/t. Cave footprint optimization was completed in Geovia's Footprint Finder software and applied a 700 m maximum height of draw.
- Average bulk density assigned by domain is as follows: 2.47 grams per cubic centimetre (g/cm<sup>3</sup>) for all near-surface breccias, 2.60 g/cm<sup>3</sup> for the deeper Mammoth and Keel breccias, porphyry mineralisation, and all other areas outside of breccias.
- Preliminary variable metallurgical recovery by metal and domain are considered for CuEq as follows: copper recovery of 92%, 85%, and 60% within sulphide, transitional, and oxide material, respectively; molybdenum recovery of 78% and 68% for sulphide and transitional material, respectively; and silver recovery of 50% and 40% for sulphide and transitional material, respectively.
- Mineral Resource (MRE) copper equivalent (CuEq) values are calculated using commodity type and price, considering the relevant preliminary recovery rate based on domain. For example, sulphide CuEq =  $[(\text{Cu grade}/100 * 0.92 \text{ Cu recovery} * 2,204.62 * \$3.80) + (\text{Mo grade}/100 * 0.78 \text{ Mo recovery} * 2,204.62 * \$13.00) + (\text{Ag grade} * 0.50 \text{ Ag recovery} * \$20.00/31.10348)] / (0.92 \text{ Cu recovery} * 2,204.62 * \$3.80) * 100$ .
- Preliminary Economic Assessment (PEA) copper equivalent (CuEq) values are calculated using commodity type and price, considering the relevant recovery rate based on domain, applied using a regression formula as a function of grade. Recovery regression formulas are based on the outcomes of the 2023 metallurgical test work and associated recovery guidance. Metal prices used in the calculation include \$3.80/lb copper, \$13.00/lb molybdenum, \$20.00/oz silver.
- Mineral resources are not mineral reserves and do not have demonstrated economic viability. There is no certainty that all or any part of the mineral resources will be converted into mineral reserves in the future. The estimate of mineral resources may be materially affected by environmental permitting, legal, title, taxation, socio-political, marketing, or other relevant issues.
- All quantities are rounded to the appropriate number of significant figures; consequently, sums may not add up due to rounding.



# COPPER CREEK: PEA HIGHLIGHTS



**51,100 tpa**

Life-of-Mine Average Annual Payable CuEq<sup>2</sup> Production

**3.4 Blb**

Life-of-Mine Payable CuEq<sup>2</sup> Production

**4.2 Blb**

Measured and Indicated Copper Mineral Resource<sup>a</sup>

## KEY FINANCIAL DATA

Post-tax NPV <sub>(7%)</sub>	\$713 million
Post-tax IRR	15.6%
Post-tax Payback Period	4.1 years
Post-tax NPV <sub>(7%)</sub> / Initial Capital Ratio	0.9:1
Initial Capital	\$798 million
Sustaining and Expansion Capital	\$1,689 million
Closure and Reclamation	\$170 million
Metal Prices	\$3.80/lb Cu, \$13.00/lb Mo, \$20/oz Ag

## ANTICIPATED PRODUCTION PROFILE

Mine Life <sup>b</sup>	32 years
Tonnes Milled <sup>c</sup>	10.8 Mtpa / 30,000 tpd
Open Pit Strip Ratio (waste:ore)	1.2:1
Copper Recovery (sulphide)	94.4%

### Payable Production (per year)<sup>d, e</sup>

Copper	106 Mlbs
Molybdenum	1.4 Mlbs
Silver	324.6 Koz
CuEq <sup>2</sup>	51.1 Kt

### Costs (by product)<sup>3</sup>

LOM Production Cash Costs	\$1.67/lb Cu
LOM All-in Sustaining Costs	\$1.85/lb Cu

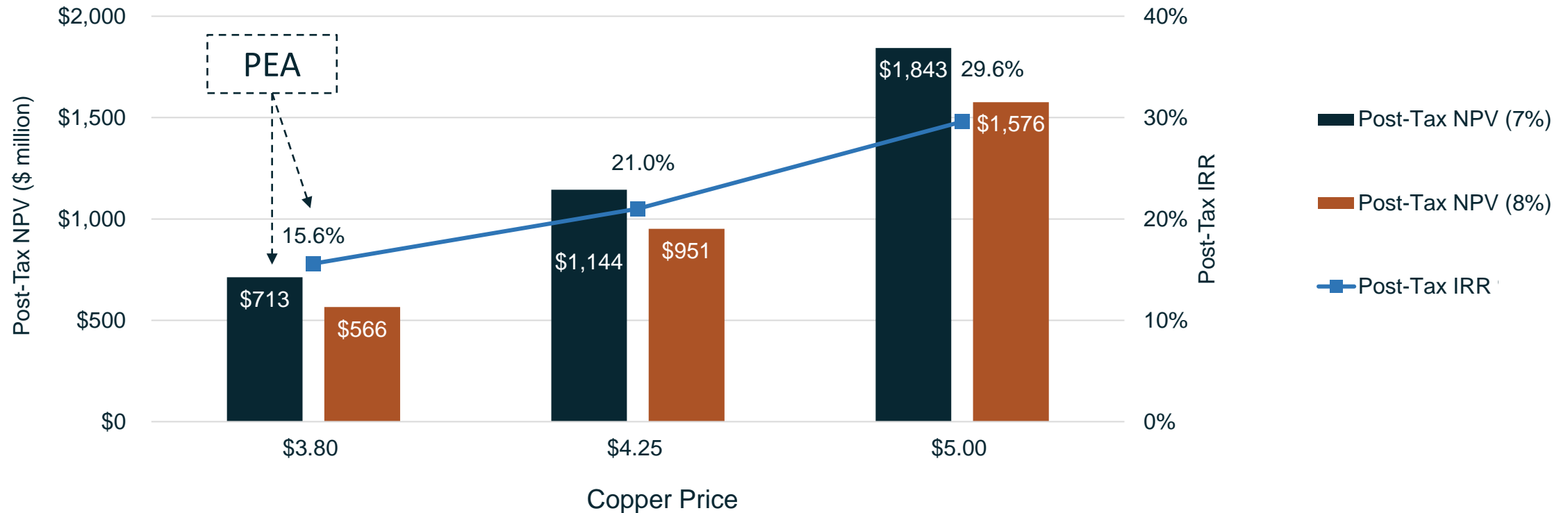
Note: Refer to the Endnotes slide at the end of this presentation.

- a) The Mineral Resource Estimate was published in a news release dated May 3, 2023 and the Copper Creek PEA Technical Report. For the complete MRE tables and related notes refer to the relevant slides at the end of this presentation.
- b) Mine life includes active mining (Year 1 – 29) and final processing of stockpiles (Year 30 – 32)
- c) Tonnes milled are exclusive of oxide and represent the average over the 32-year life of mine.
- d) Average annual production considers the period of active mining during Years 1 - 29, Year 30 – 32 includes processing of stockpiles only.
- e) Based on payability in concentrate of 96.5%, 95% and 98.5% for copper, silver, and molybdenum, respectively. Copper cathode payability of 98% is applied.

# COPPER CREEK: PEA ECONOMIC SENSITIVITY



## Well-positioned to Leverage the Copper Price



- **Molybdenum:** An increase of \$10/lb would increase the post-tax NPV<sub>(7%)</sub> by approximately \$129 million
- **Silver:** An increase of \$5/oz would increase the post-tax NPV<sub>(7%)</sub> by approximately \$15 million



# ENDNOTES



1. Mineral Resource Estimate (“MRE”) copper equivalent values are calculated using commodity type and price, considering the relevant preliminary recovery rate based on domain. For example, sulphide CuEq =  $[(\text{Cu grade}/100 * 0.92 \text{ Cu recovery} * 2,204.62 * \$3.80) + (\text{Mo grade}/100 * 0.78 \text{ Mo recovery} * 2,204.62 * \$13.00) + (\text{Ag grade} * 0.50 \text{ Ag recovery} * \$20.00/31.10348)] / (0.92 \text{ Cu recovery} * 2,204.62 * \$3.80) * 100$ .
2. Preliminary Economic Assessment (“PEA”) copper equivalent (“CuEq”) values are calculated using commodity type and price, considering the relevant recovery rate based on domain, applied using a regression formula as a function of grade. Recovery regression formulas are based on the outcomes of the 2023 metallurgical test work and associated recovery guidance. Metal prices used in the calculation include \$3.80/lb copper, \$13.00/lb molybdenum, \$20.00/oz silver.
3. Production cash costs and all-in sustaining cash costs, net of by-product credits, per pound of copper or CuEq are non-IFRS financial performance measures with no standardized definition under IFRS. The Company believes these metrics are useful performance indicators based on industry standards and disclosures. Production cash costs are based on the direct operating costs, including mining, processing, and G&A, offsite charges, net of by-product credits. By-product credits are calculated using commodity prices: \$13.00 per pound of molybdenum, and \$20.00 per ounce of silver. Sustaining cash costs include sustaining capital expenditures and royalties.

## **Sampling Methodology, Chain of Custody, Quality Control and Quality Assurance:**

All sampling was conducted under the supervision of the Company's geologists and the chain of custody from Copper Creek to the independent sample preparation facility, ALS Laboratories in Tucson, AZ, was continuously monitored. The samples were taken as ½ core, over 2 m core length. Samples were crushed, pulverized and sample pulps were analyzed using industry standard analytical methods including a 4-Acid ICP-MS multielement package and an ICP-AES method for high-grade copper samples. Gold was analyzed on a 30 g aliquot by fire assay with an ICP-AES finish. A certified reference sample was inserted every 20th sample. Coarse blanks were inserted every 20th sample. Approximately 5% of the core samples were cut into ¼ core and submitted as field duplicates. On top of internal QA-QC protocol, additional blanks, reference materials and duplicates were inserted by the analytical laboratory according to their procedure. Data verification of the analytical results included a statistical analysis of the standards and blanks that must pass certain parameters for acceptance to ensure accurate and verifiable results.



# FARADAY COPPER

## CONTACT INFORMATION

Suite 2800, 1055 Dunsmuir Street  
PO Box 49225  
Vancouver, BC Canada  
[www.faradaycopper.com](http://www.faradaycopper.com)

## STACEY PAVLOVA, CFA

VP Investor Relations  
778-730-1067  
[info@faradaycopper.com](mailto:info@faradaycopper.com)