



FARADAY COPPER

LUNDINGROUP
A Lundin Group Company

Growing U.S. Copper Resources

CORPORATE PRESENTATION
February 2025

FDY: TSX | CPPKF: OTCQX

CAUTIONARY STATEMENT



Some of the statements in this presentation, other than statements of historical fact, are “forward-looking statements” and are based on the opinions and estimates of management as of the date such statements are made and are necessarily based on estimates and assumptions that are inherently subject to known and unknown risks, uncertainties and other factors that may cause actual results, level of activity, performance or achievements of Faraday Copper Corp. (“Faraday Copper” or “Faraday” or “The Company”) to be materially different from those expressed or implied by such forward-looking statements. Forward-looking statements and information may be identified by such terms as “anticipates”, “believes”, “targets”, “estimates”, “plans”, “expects”, “may”, “will”, “could” or “would”. Although Faraday Copper believes the expectations expressed in such forward-looking statements are based on reasonable assumptions, such statements should not be in any way construed as guarantees of future performance and actual results or developments may differ materially. Accordingly, readers should not place undue reliance on forward-looking statements or information. The Company does not undertake to update any forward-looking statements or information except as may be required by applicable securities laws.

Factors that could cause actual results to differ materially from those in forward-looking statements include without limitation: market prices for metals; the conclusions of detailed feasibility and technical analyses; lower than expected grades and quantities of resources; receipt of regulatory approval; mining rates and recovery rates; significant capital requirements; price volatility in the spot and forward markets for commodities; fluctuations in rates of exchange; taxation; controls, regulations and political or economic developments in the countries in which Faraday does or may carry on business; the speculative nature of mineral exploration and development, competition; loss of key employees; rising costs of labour, supplies, fuel and equipment; actual results of current exploration or reclamation activities; accidents; labour disputes; defective title to mineral claims or property or contests over claims to mineral properties; unexpected delays and costs inherent to consulting and accommodating rights of Indigenous peoples and other groups; risks, uncertainties and unanticipated delays associated with obtaining and maintaining necessary licenses, permits and authorizations and complying with permitting requirements, including those associated with the Copper Creek property; and uncertainties with respect to any future acquisitions by Faraday. In addition, there are risks and hazards associated with the business of mineral exploration, development and mining, including environmental events and hazards, industrial accidents, unusual or unexpected formations, pressures, cave-ins, flooding and the risk of inadequate insurance or inability to obtain insurance to cover these risks as well as “Risk Factors” included in Faraday’s disclosure documents filed on and available at www.sedarplus.ca.

The metrics presented in this presentation are based on a PEA that includes an economic analysis of the potential viability of Mineral Resources. Mineral Resources that are not Mineral Reserves do not have demonstrated economic viability. This PEA is preliminary in nature, includes Inferred Mineral Resources that are considered too speculative geologically to have the economic considerations applied to them that would enable them to be categorized as Mineral Reserves, and there is no certainty the PEA will be realized.

This presentation makes reference to certain non-IFRS measures including production cash costs and all-in sustaining costs (“AISC”). These measures are not recognized under IFRS, do not have a standardized meaning prescribed by IFRS and therefore may not be comparable to similar measures presented by other issuers; however, Faraday believes that these measures are useful to assist readers in evaluating the total costs of producing copper from their operations. While there is no standardized meaning across the industry for this measure, the Company defines production cash costs as based on the direct operating costs, including mining, processing, and G&A, offsite charges, net of by-product credits. By-product credits are calculated using commodity prices: \$13.00 per pound of molybdenum and \$20.00 per ounce of silver. AISC is the sum of the production cash costs, sustaining capital expenditures and royalties.

This presentation does not constitute an offer to sell or a solicitation of an offer to buy any securities in any jurisdiction to any person to whom it is unlawful to make such an offer or solicitation in such jurisdiction. This presentation is not, and under no circumstances is to be construed as, a prospectus, an offering memorandum, an advertisement or a public offering of securities in Faraday Copper in Canada, the United States or any other jurisdiction. No securities commission or similar authority in Canada or in the United States has reviewed or in any way passed upon this presentation, and any representation to the contrary is an offence.

All of the forward-looking statements contained in this presentation are qualified by these cautionary statements. Faraday Copper does not intend, and does not assume any obligation, to update these forward-looking statements, except as required under applicable securities legislation. For more information on Faraday Copper, readers should refer to www.sedarplus.ca for the Faraday Copper’s filings with the Canadian securities regulatory authorities.

Technical information in this presentation has been reviewed and approved by Thomas Bissig, Professional Geologist, VP Exploration of the Company and Zach Allwright, Professional Engineer, VP Projects and Evaluations of the Company, both a “Qualified Person” as defined under National Instrument 43-101 - Standards of Disclosure for Mineral Projects (“NI 43-101”). Both have verified the data contained herein (where possible) which included a review of the sampling analytical and test methods underlying the data, information and opinions disclosed herein.

All amounts are in U.S. dollars unless otherwise stated.

INVESTMENT HIGHLIGHTS



Strategy: Creating Value by Advancing One of the Largest Copper Projects in the U.S.

- **Copper Creek is a Cu-Mo-Ag resource** in Arizona with 4.2 Blbs of copper Measured and Indicated Mineral Resources
- **Current U.S. Administration is highly-supportive of domestic mining projects**
- **Significant exploration upside** with ongoing drilling, new near-surface discoveries and a portfolio of untested targets
- **Updated technical report in H2 2025 targeting enhanced project economics** through increased scale, optimized process flowsheet and inclusion of gold
- **Supported by the Lundin Family, Murray Edwards and Pierre Lassonde** and well-funded to deliver on our strategy



Notes: The Mineral Resource Estimate ("MRE") and Preliminary Economic Assessment ("PEA") for the Copper Creek project were published in a news release dated May 3, 2023 were reported in a technical report titled "Copper Creek Project NI 43-101 Technical Report and Preliminary Economic Assessment" with an effective date of May 3, 2023 available on the Company's website at www.faradaycopper.com and on the Company's SEDAR+ profile at www.sedarplus.ca. For the complete MRE tables and related notes refer to the relevant slides at the end of this presentation.

WELL-POSITIONED TO ADVANCE COPPER CREEK



Delivering on Our Strategy

2021 – 2022

- ✓ President and CEO Paul Harbidge appointed
- ✓ New Board and management team
- ✓ Restarted technical work
- ✓ **Mineral Resource Estimate Update (July 2022)**
- ✓ 16,000 metres of drilling

2023 – 2024

- ✓ **Preliminary Economic Assessment and Updated MRE (May 2023)**
- ✓ Commenced a 30,000 metre drill program
- ✓ Discovered near-surface mineralization at the American Eagle area and Area 51
- ✓ Gold program
- ✓ Metallurgical program

2025 Catalysts

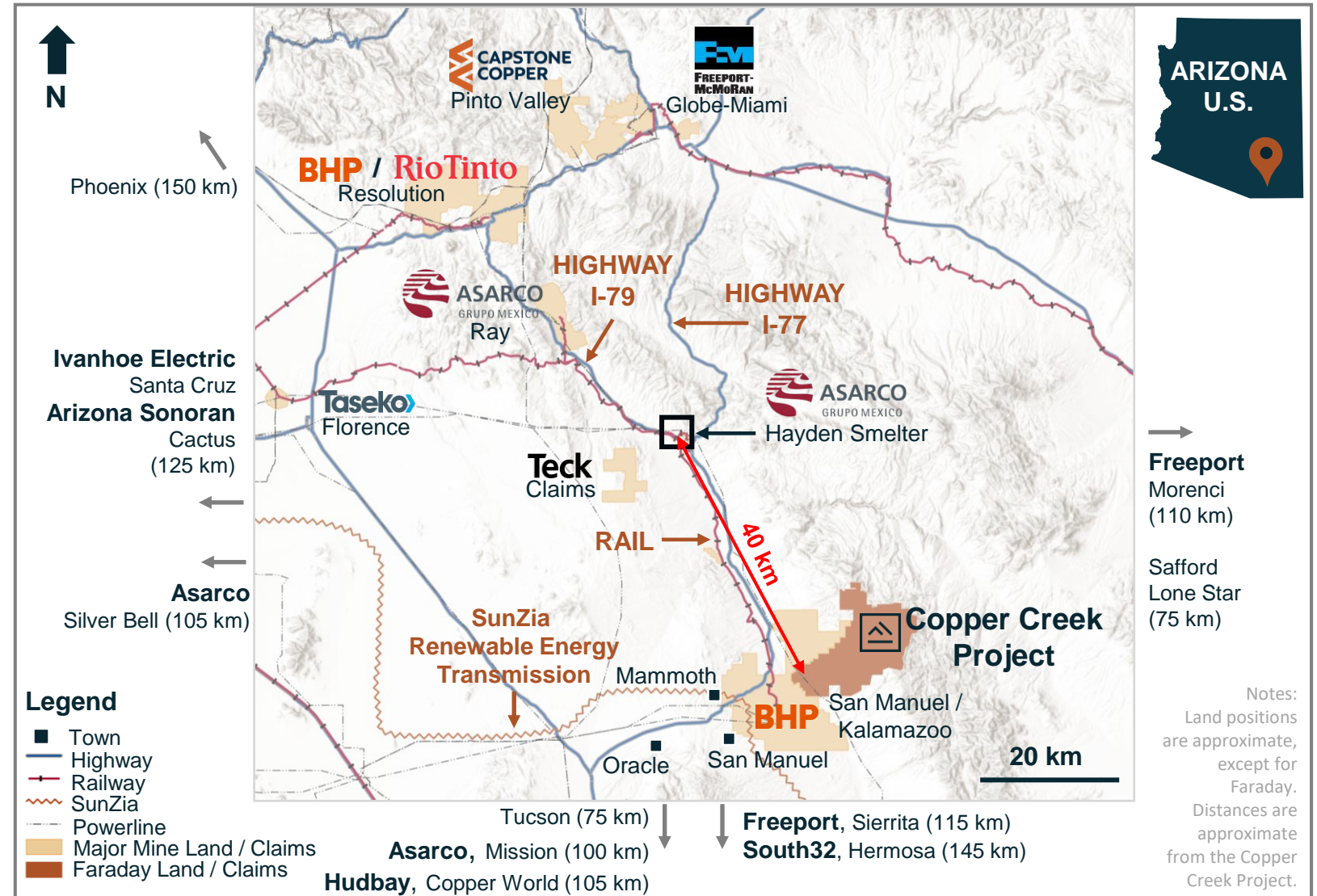
- ✓ Metallurgical program
 - Drill results
 - **Technical Report update (H2 2025)** targeting:
 - Updated Mineral Resource
 - Increased throughput and annual metal production
 - Maintaining low initial capital
 - Enhanced project economics

LOCATED IN ARIZONA COPPER COUNTRY

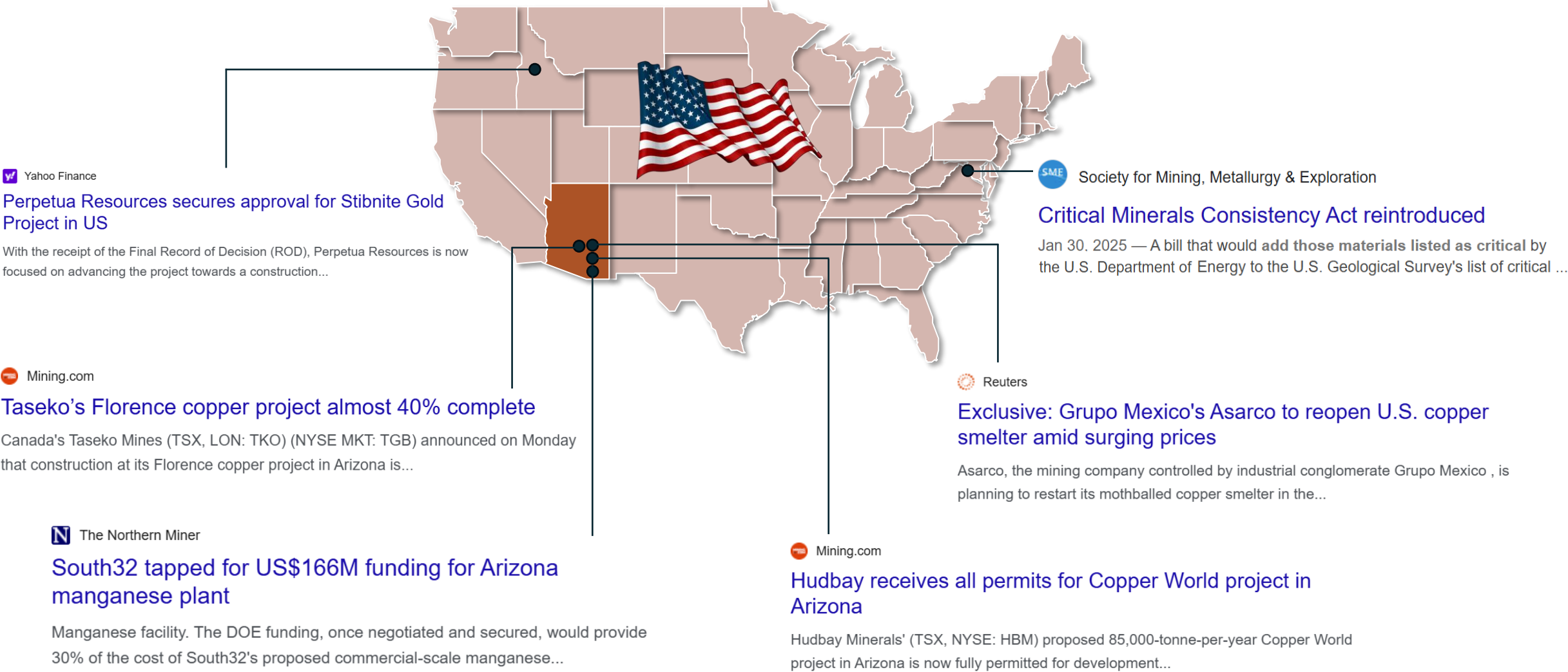
Arizona Produced ~70% of U.S. Copper in 2023 (USGS)



- Excellent infrastructure with access to road, rail and power
- Near mining and service hubs
- Adjacent to BHP's San Manuel / Kalamazoo deposit
- ~40 km from the Hayden Smelter (Asarco)





GOOD NEWS FOR MINING IN THE USA



CORPORATE OVERVIEW



Analyst Coverage

BMO 	Rene Cartier
cg / Canaccord Genuity	Dalton Baretto
Ventum 	Connor Mackay

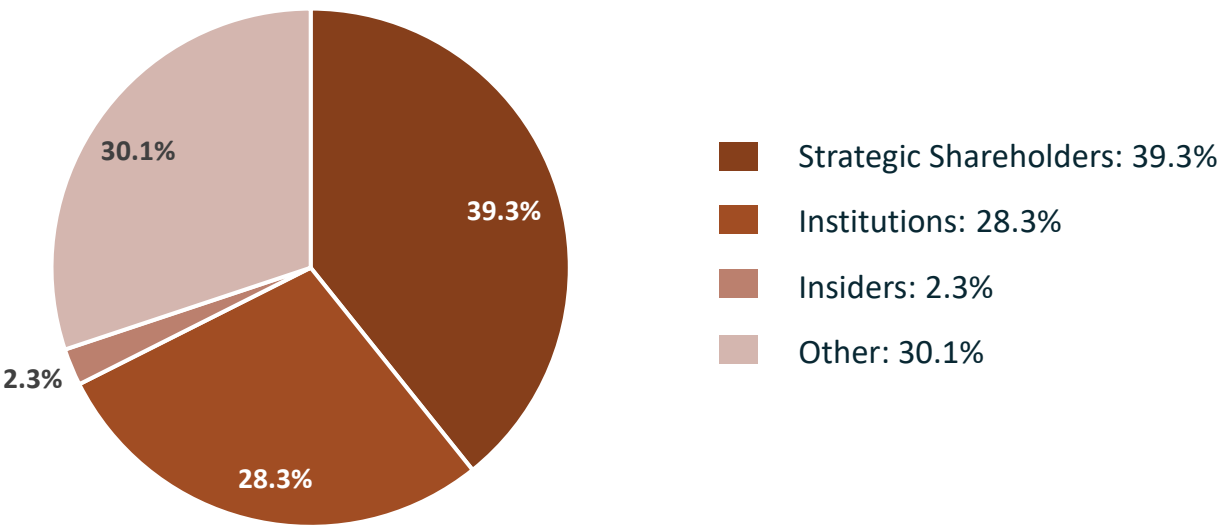
Top Strategic Shareholders

Lundin Family
Murray Edwards **Pierre Lassonde**

Financial Overview

C\$160.2M	Market Capitalization
C\$23.0 M	Financing <i>(May 30, 2024)</i>
C\$22.1 M	Cash & Equivalents <i>(Sept 30, 2024)</i>
205.3 M	Shares Outstanding
11.4 M	Options
12.5 M	Warrants
4.9 M	Restricted Share Units

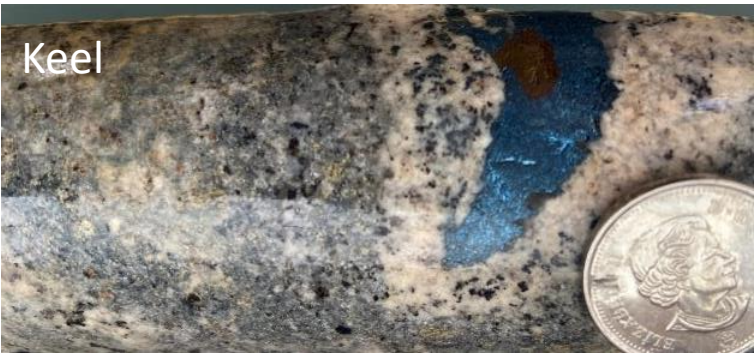
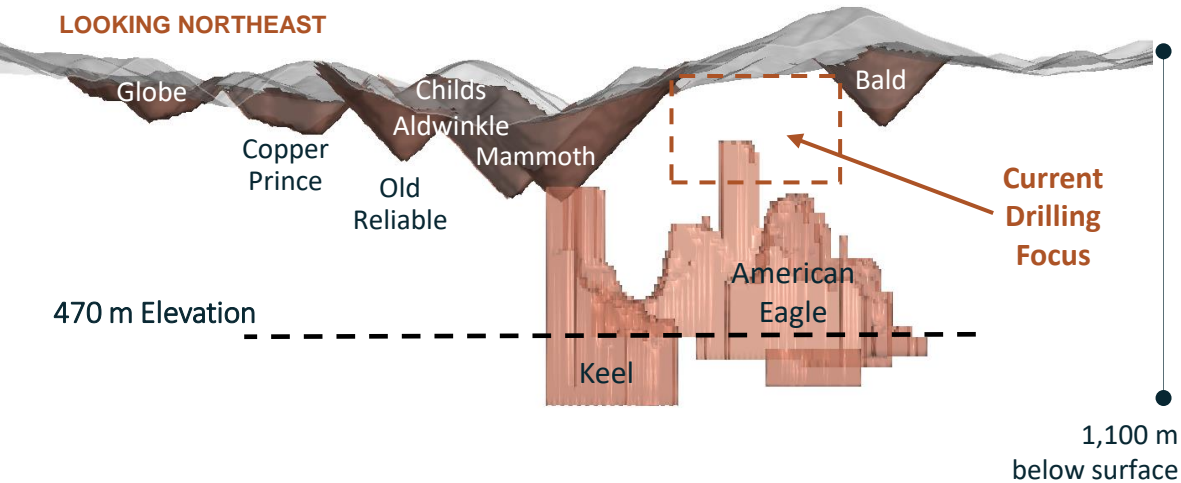
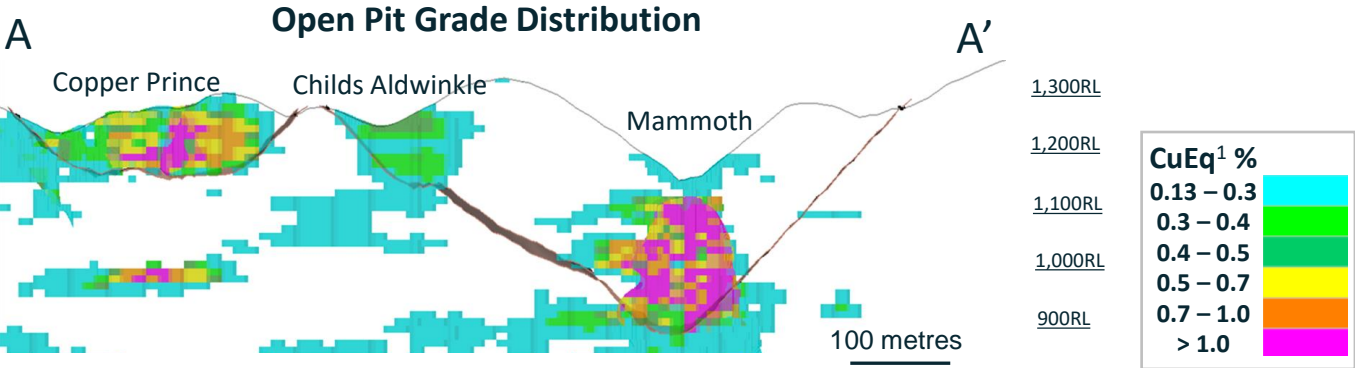
Ownership



Notes: Market Capitalization as of February 19, 2025. Ownership as of May 31, 2024. Shares Outstanding, Options, Warrants, and Restricted Share Units as of November 3, 2024. Each warrant entitles the holder to purchase one common share at an exercise price of C\$0.60 at any time up to September 2026.

GEOLOGY AND MINERALIZATION

High-grade Breccias and Vein-hosted Porphyry



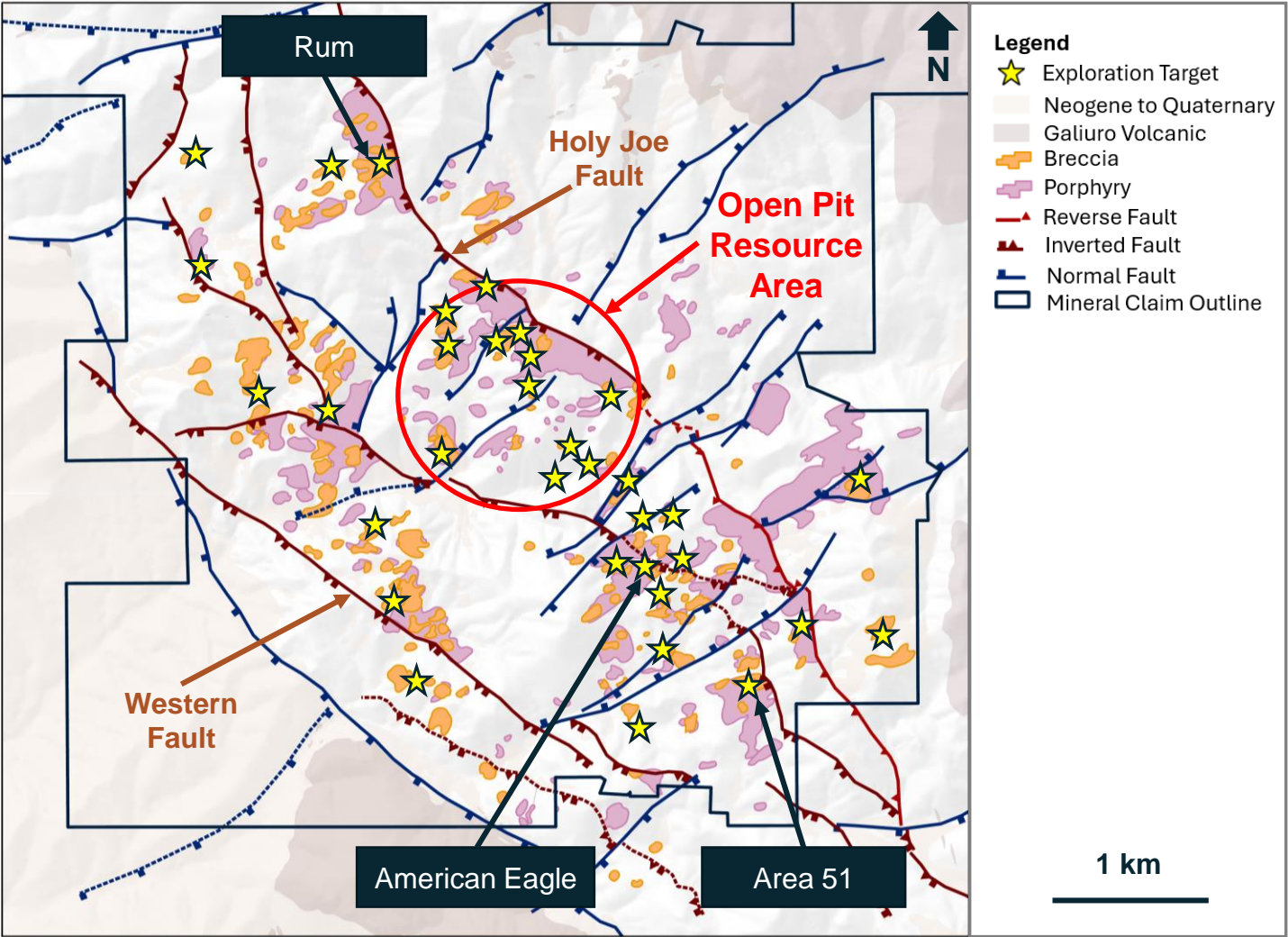
Note: The images above reflect conceptual open pit shells constrained with RPEEE at CuEq¹ cut-off grades of 0.13% for oxide material, 0.14% for transitional material, and 0.13% for sulphide material. Underground footprints constrained with RPEEE are stated as contained within estimation domains above 0.31% CuEq¹ cut-off grades. These were utilized as the resource constraining volumes in the 2023 MRE disclosed in a news release dated May 3, 2023. The potential grade and scale of the open pit and underground inventory is conceptual in nature. There has been insufficient technical analysis to define the open pit and underground inventory as economically viable inventory or mineable reserve.

POTENTIAL FOR NEW DISCOVERIES

Significant Growth Opportunities in an Underexplored District



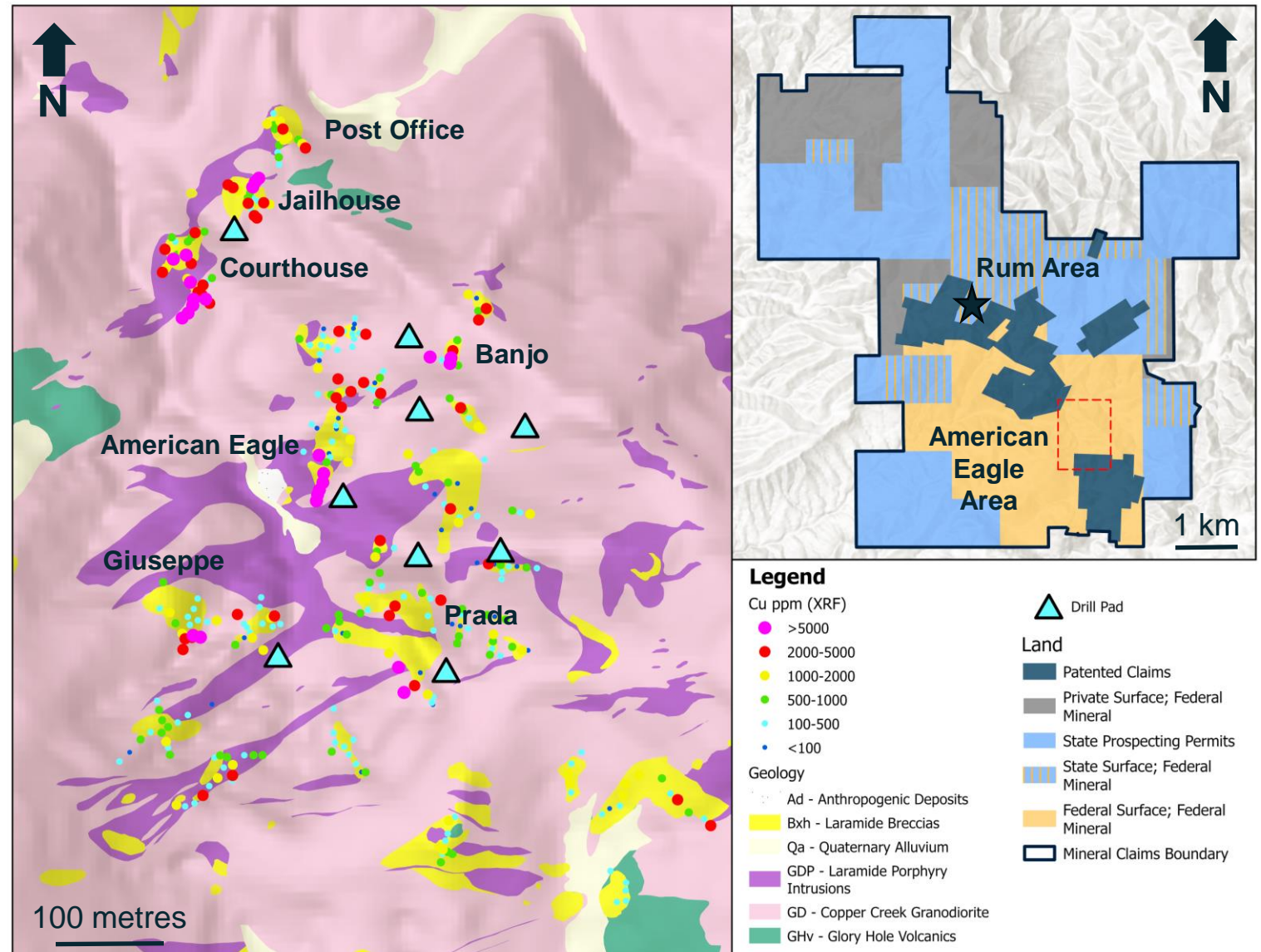
34 high priority targets
across the property



DRILLING AT THE AMERICAN EAGLE AREA

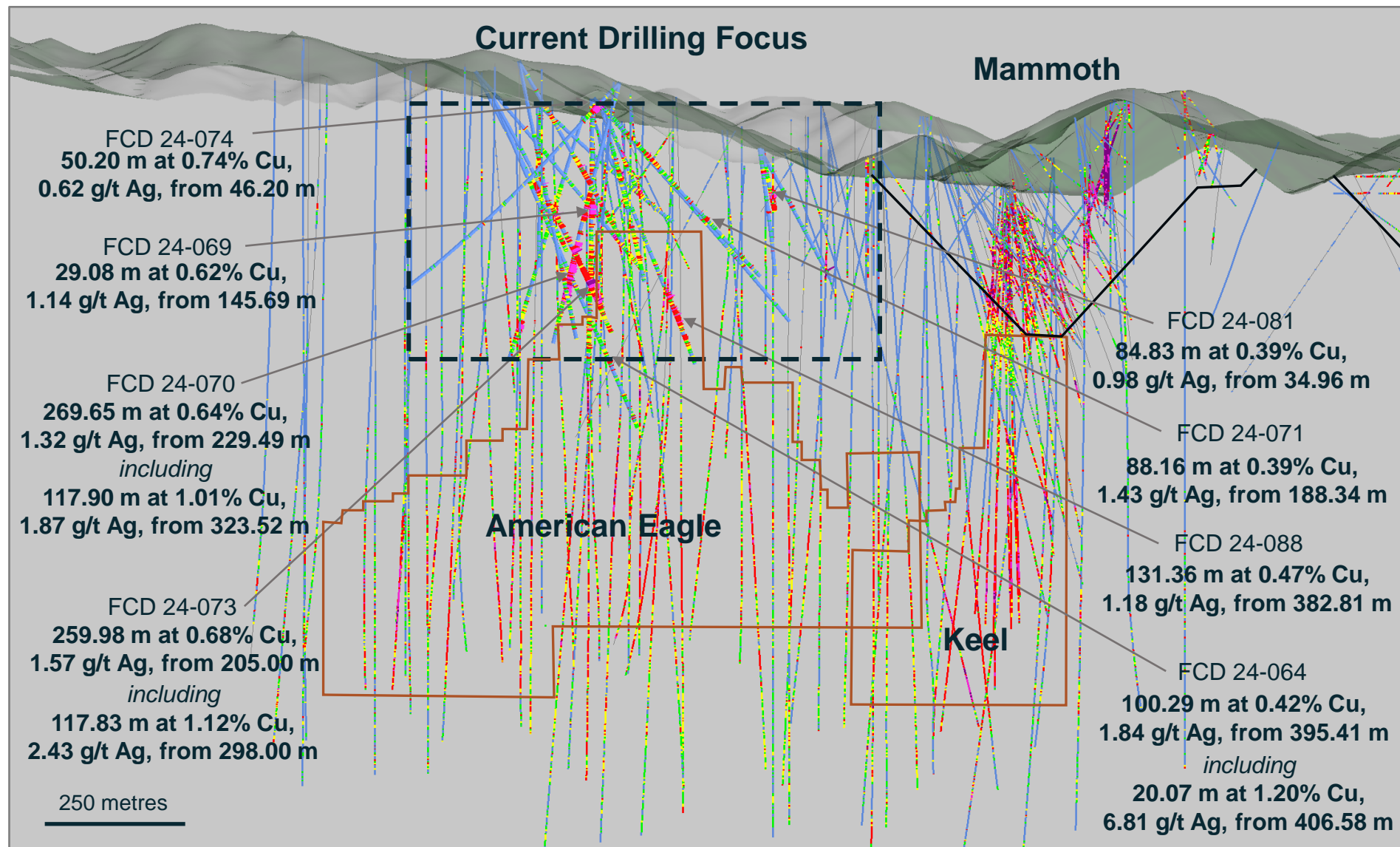


- Intersected significant mineralization above American Eagle porphyry underground resource
- New discovery at Banjo breccia: **117.83 m at 1.12% copper** and 2.43 g/t silver
- Confirmed vertical continuity of mineralization from surface to underground
- Drilling continues in the American Eagle area, focused on near-surface mineralization



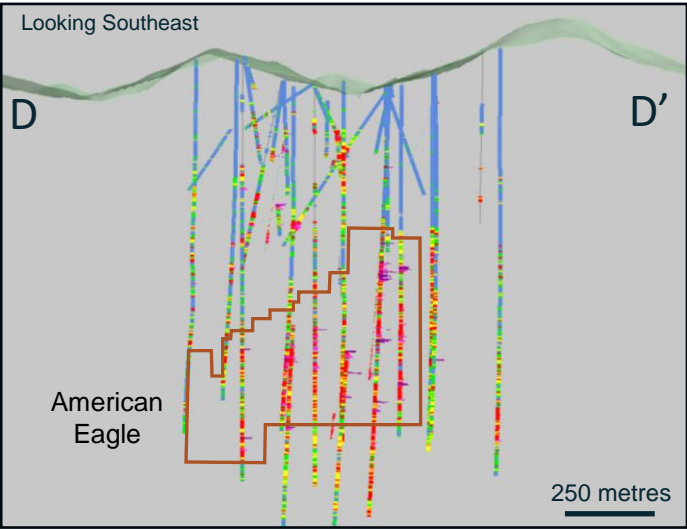
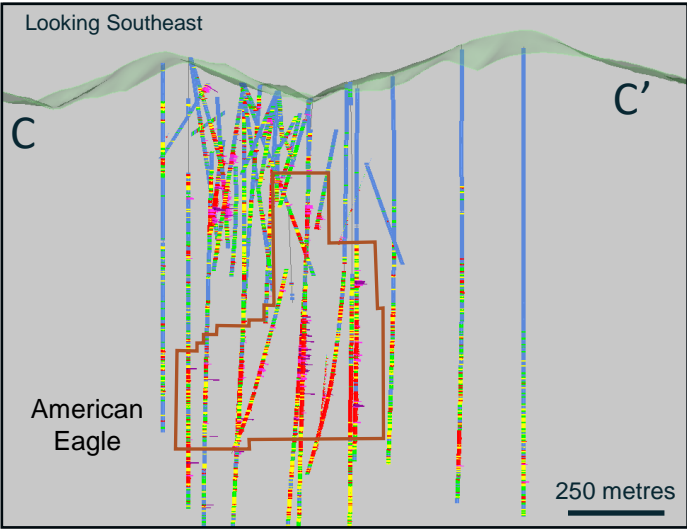
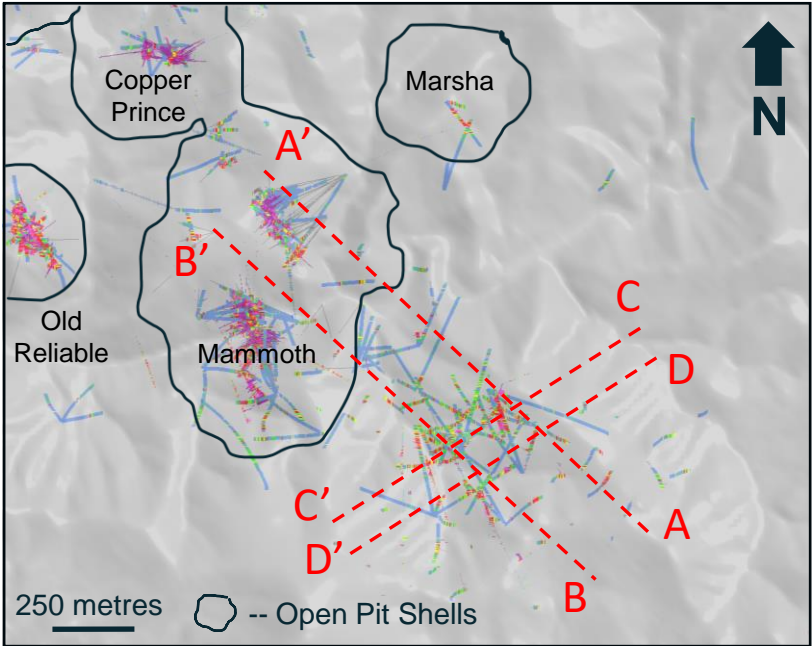
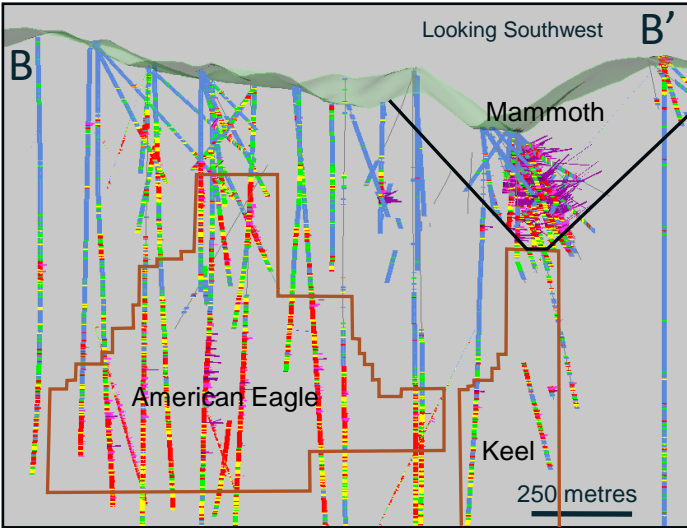
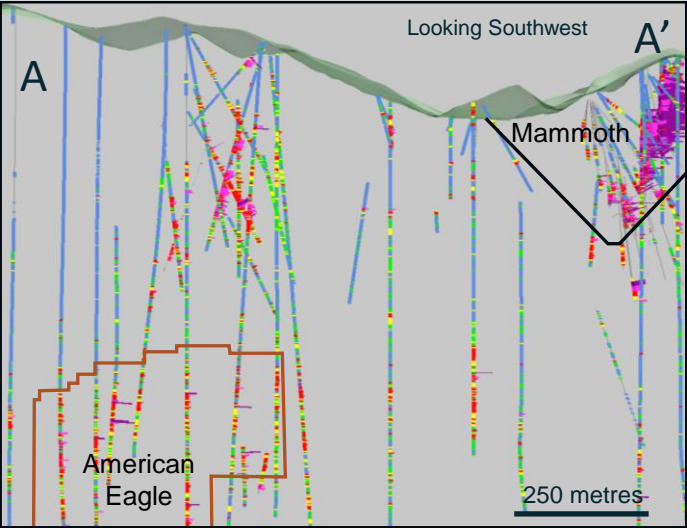
Note: For further details refer to the news releases available on the Company's website and on SEDAR+.

AMERICAN EAGLE AREA: NEAR SURFACE POTENTIAL



Note: Drill results detailed on this section are from the Phase III drill program and for further details on these results, refer to news releases available on the Company's website and on SEDAR+.

AMERICAN EAGLE: DRILLING CONFIRMS CONTINUITY



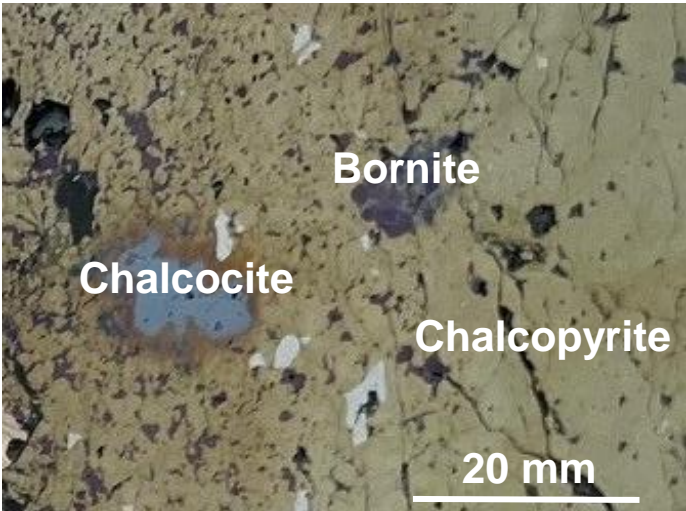
Note: For further details refer to the news releases available on the Company’s website and on SEDAR+.

METALLURGICAL PERFORMANCE OVERVIEW

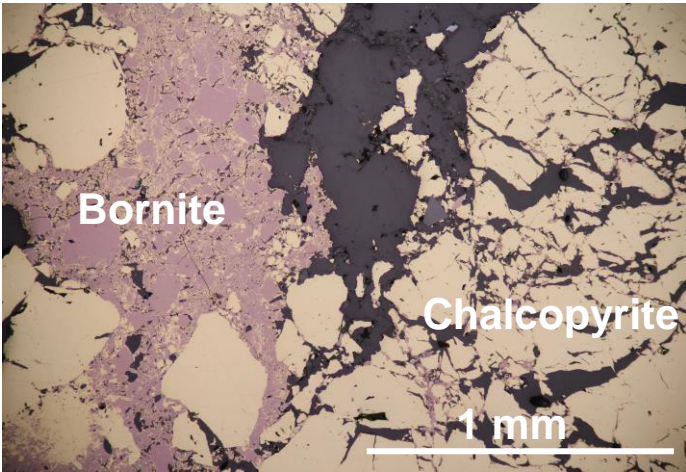


Unlocking Significant Upside with New Metallurgical Results

Coarse Grind Optimization	Additional Benefits	Gold Program
Over 95% copper sulphide recovery with coarse grind	High grade copper concentrate (over 30% copper)	Gold recovery over 75% supporting potential to add gold to the resource
Grind energy significantly reduced	Confirmation of clean concentrate	Assay data and mineralogy show gold and copper are correlated
Unlocks processing scalability and operating cost reduction	Oxide copper recovery improved significantly	Gold associated with high grade breccias and bornite-rich porphyry



Polished massive sulphide core from the Copper Prince breccia



Polished section photograph of Childs Aldwinkle mineralization

Note: Comparisons on this slide are relative to the PEA base case. For further details refer to the Company’s news release dated February 20, 2025. Additional details for the gold program are available in news releases dated October 5, 2023 and May 7, 2024.

ENVIRONMENTAL & STAKEHOLDER ENGAGEMENT

Baseline Data Collection and Stakeholder Outreach



ENVIRONMENT

Baseline environmental monitoring systems in place for data collection to support permitting process

- Water: hydrology studies, sampling and elevation measurements
 - Flow meters and piezometers
 - Drive-point wells
 - Classification (404 Permit)
- Air quality monitoring and meteorological station
- Flora and fauna studies
- Archaeological and cultural surveys



STAKEHOLDER ENGAGEMENT

Commitment to open dialogue and support for the local economy and social programs

- Annual community meetings and supporting local organizations within our communities
- Outreach, meetings and site visits with Arizona's Native American Groups
- Proactive engagement with regulators including Bureau of Land Management, Arizona Game & Fish, U.S. Army Corps of Engineers and Arizona Department of Environmental Quality

COPPER CREEK: NEXT STEPS



Resource Update

+30,000 metres of drilling,
targeting near-surface resource
expansion

Gold program confirms potential
payable byproduct

Technical Study Update

Targeting increased throughput and
annual metal production profile

Maintaining low initial capital profile
and enhanced project economics

Exploration Upside

Steady news flow of assay results
from ongoing Phase III drill program

Underexplored property with
several hundred untested breccias
mapped at surface





FARADAY COPPER

Contact Us

CONTACT INFORMATION

Suite 2800, 1055 Dunsmuir Street
PO Box 49225
Vancouver, BC Canada
www.faradaycopper.com

STACEY PAVLOVA, CFA

VP Investor Relations
778-730-1067
info@faradaycopper.com



FARADAY COPPER

Appendix

LEADERSHIP TEAM AND BOARD

Senior Mining Company Talent Who Know Great Projects



Management



Paul Harbidge
President, CEO & Director

Prev: President & CEO of GT Gold, acquired by Newmont for \$456M, former SVP Exploration at Goldcorp and General Manager Exploration at Randgold Resources; Currently Director of Japan Gold



Graham Richardson
Chief Financial Officer
Prev: Goldcorp / Newmont



Dr. Thomas Bissig
VP Exploration
Prev: Goldcorp / Newmont



Russell Ball
Chair

Prev: CEO, Calibre Mining; CFO, Goldcorp; CFO, Newmont; Currently Director of Ivanhoe Electric and Southern Silver Exploration



Audra Walsh
Prev. CEO, Minas de Aguas Tenidas (MATSA)



Robert Doyle
Prev. CFO, Pan American Silver



Zach Allwright
VP Projects & Evaluations
Prev: Mining Plus Consulting



Aaron Cohn
VP & Country Manager, USA
Prev: Ma'aden / Newmont



Randy Engel
Prev. EVP, Strategic Development, Newmont



Arndt Brettschneider
Currently VP Operations & Projects, Filo Mining



Angela Johnson
VP Corp Dev. & Sustainability
Prev: SSR Mining, Calibre Mining



Stacey Pavlova
VP Investor Relations
Prev: SSR Mining

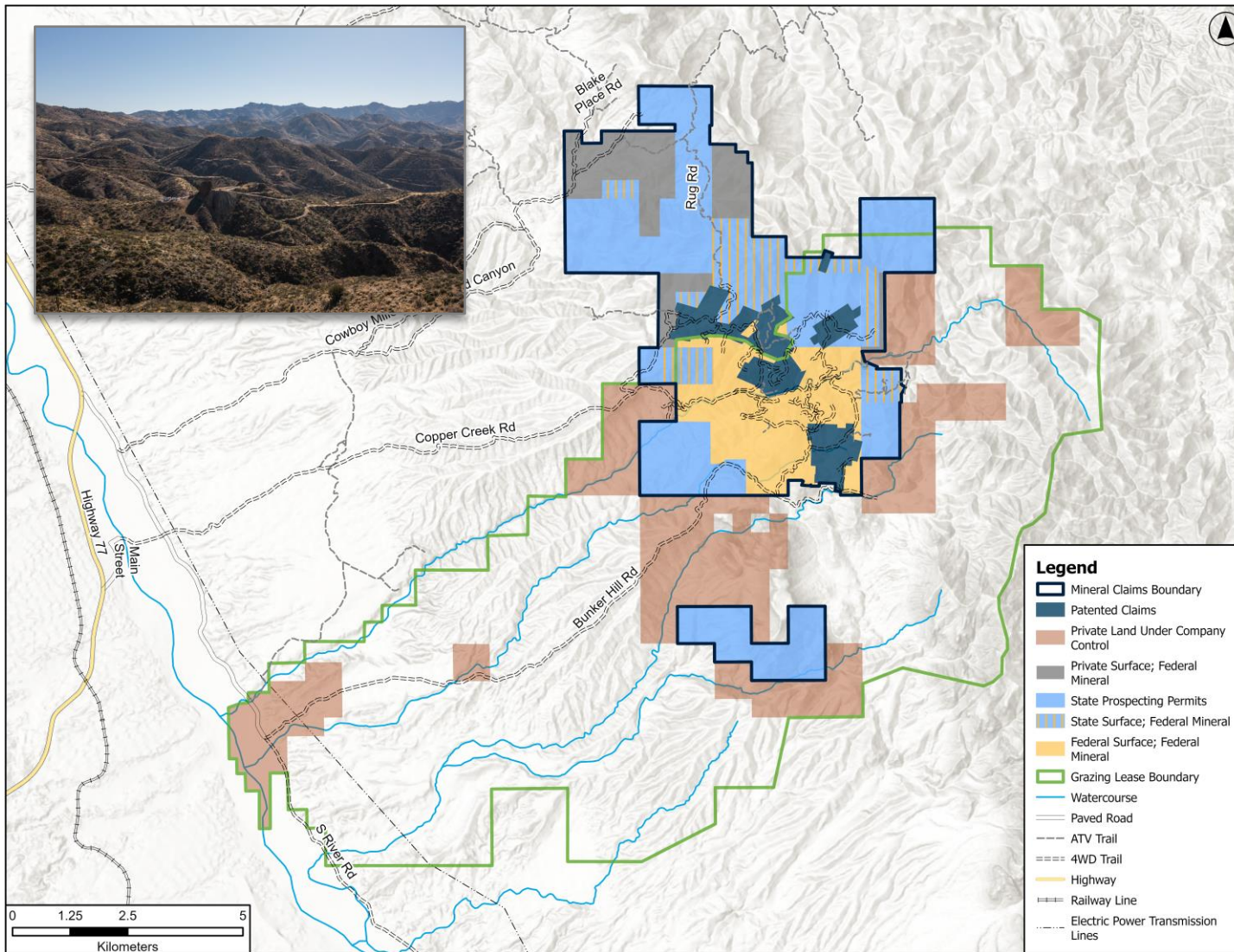


Katherine Arnold
Prev. Director, Environment, Hudbay



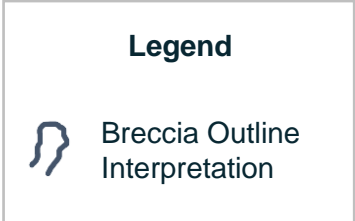
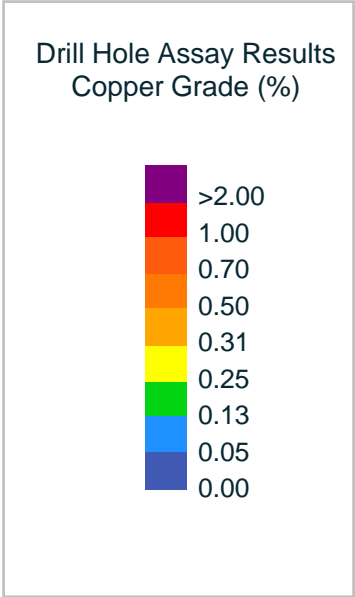
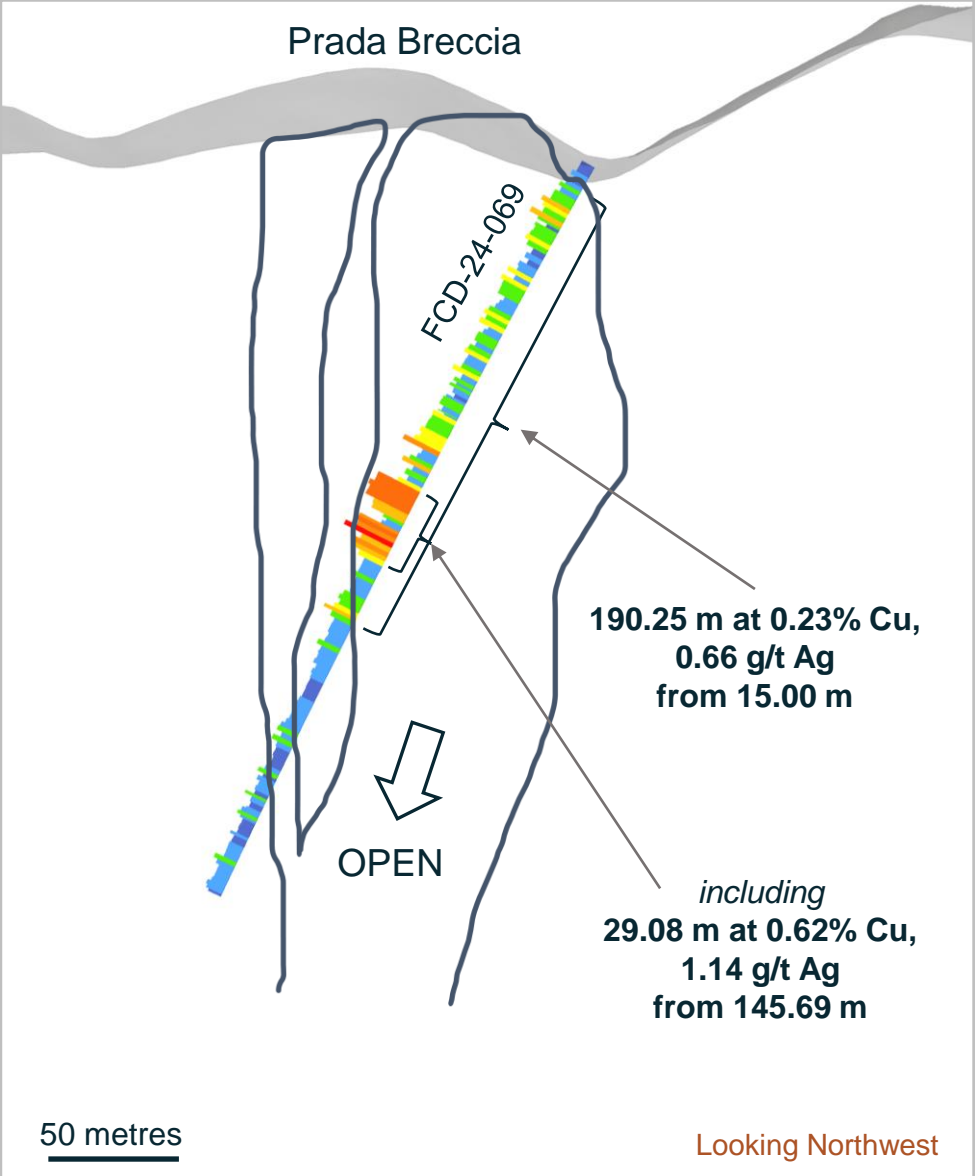
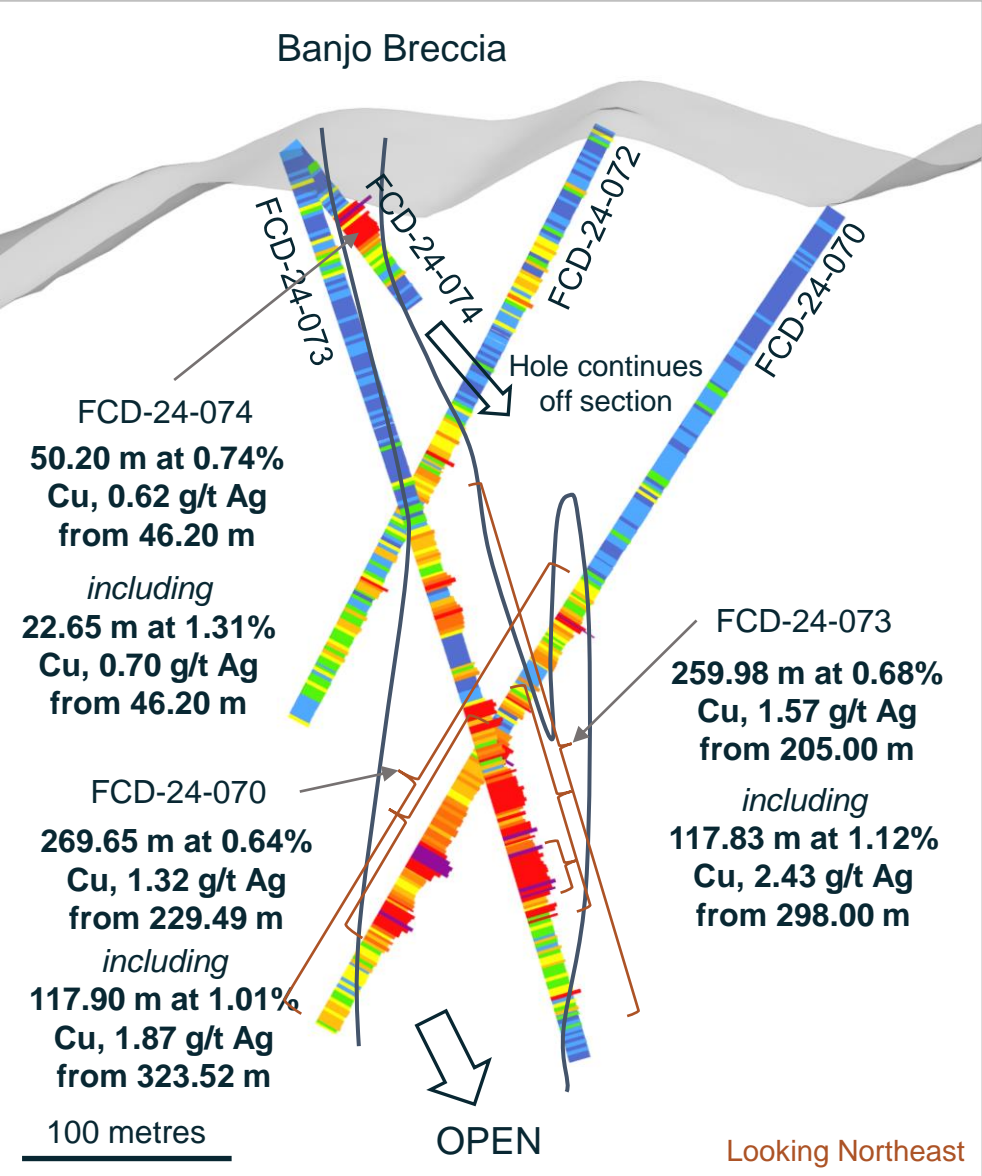
Alan Wilson
Prev. International Exploration Manager, Antofagasta

COPPER CREEK LAND PACKAGE



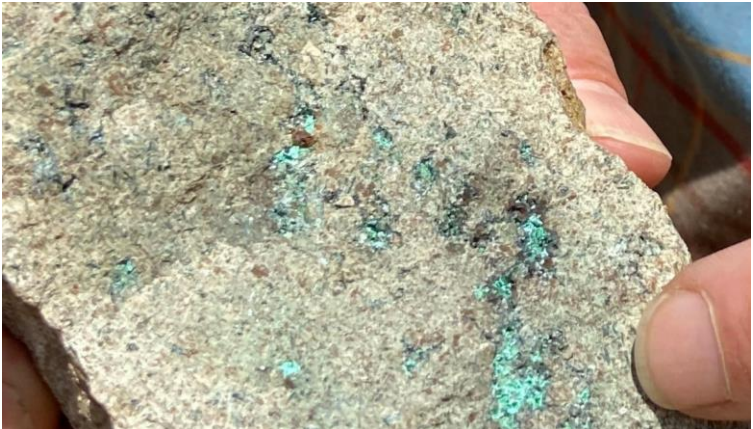
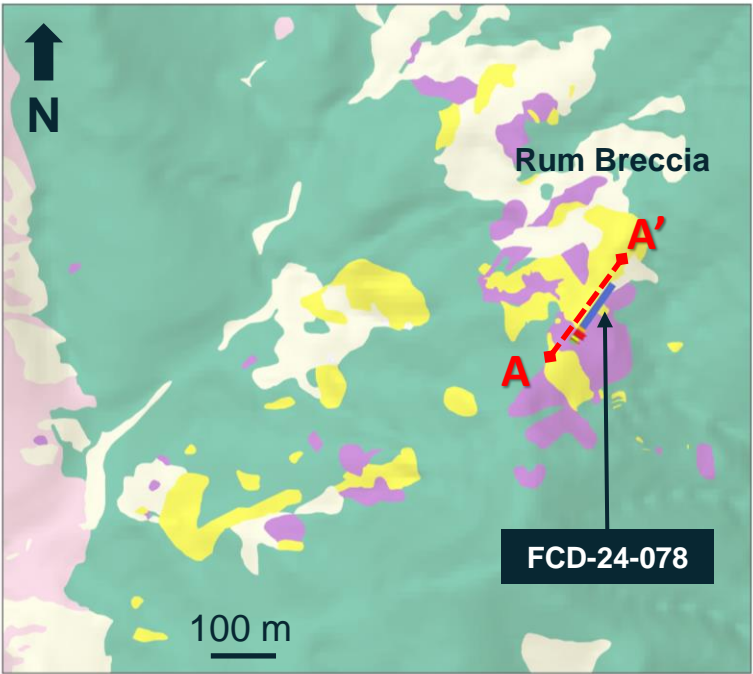
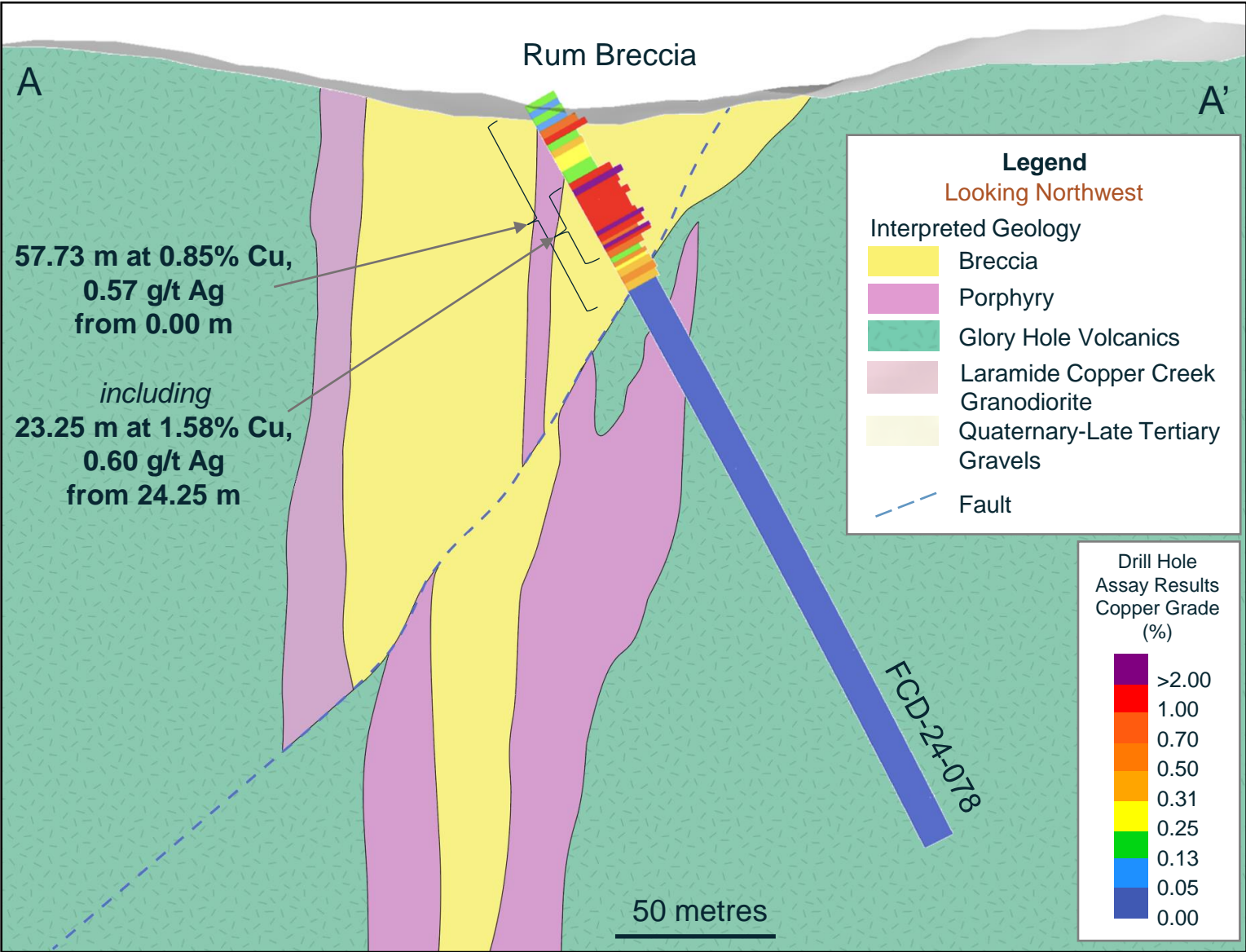
- ~73 km² property offers optionality for infrastructure placement
- Mineral claims include patented claims, unpatented claims and state prospecting permits
- Private land parcel across San Pedro corridor connecting with BHP land package
- Ranch includes ~26,000 acres of surface rights through active grazing leases

AMERICAN EAGLE AREA: NEW DISCOVERIES



Note: For further details refer to the Company's news releases dated July 25, 2024, August 21, 2024, September 24, 2024, and October 17, 2024.

RUM AREA: DRILL RESULTS

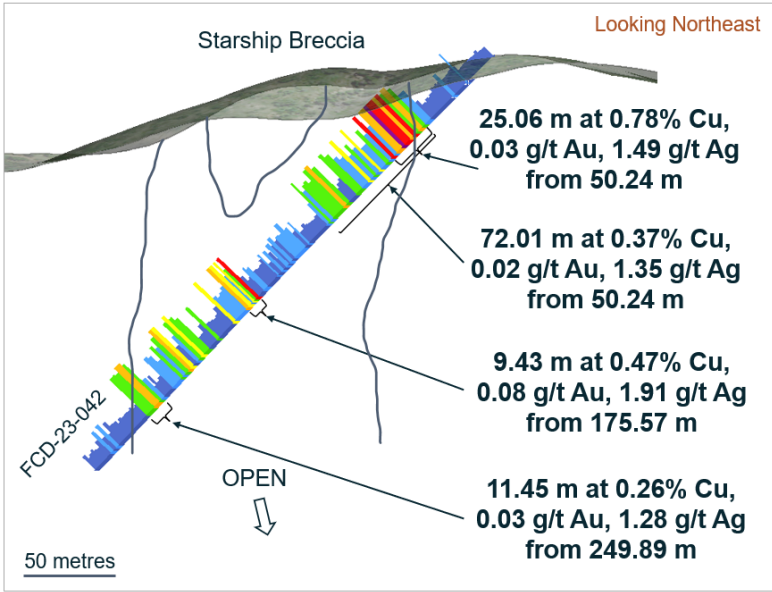


Note: For further details refer to the Company's news release dated November 19, 2024.

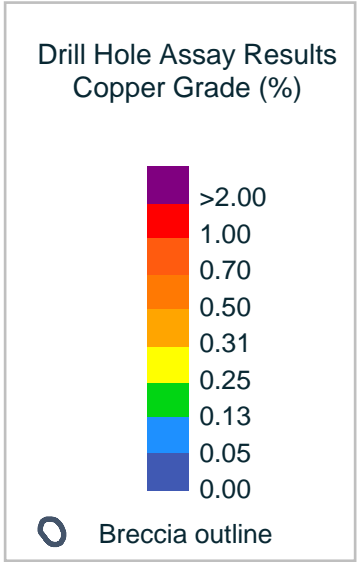
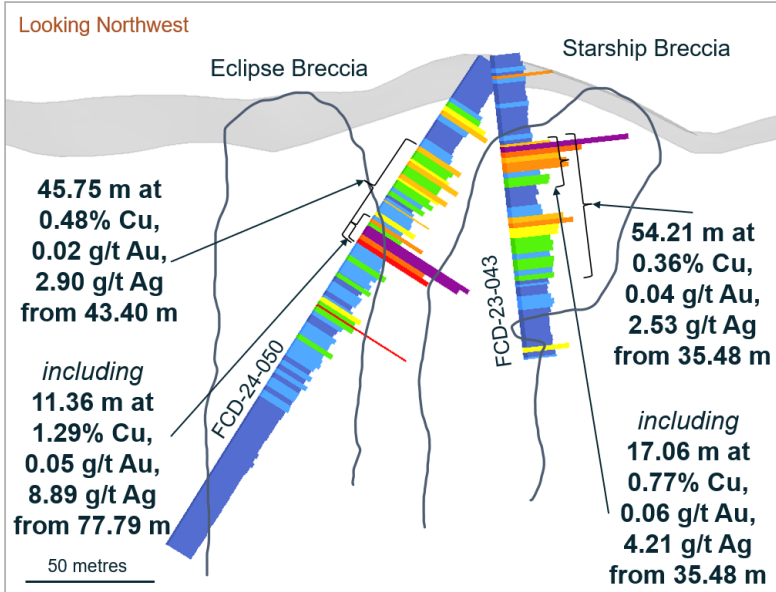
AREA 51: NEW DISCOVERY



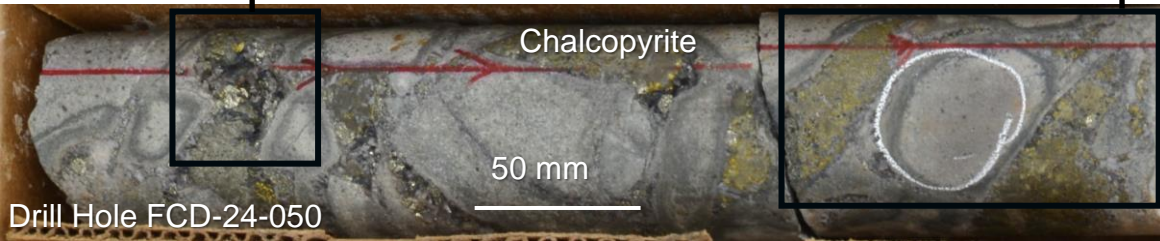
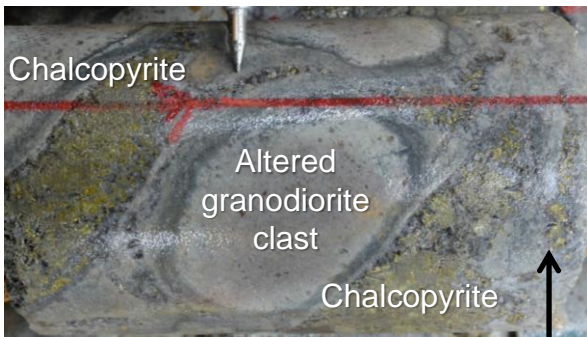
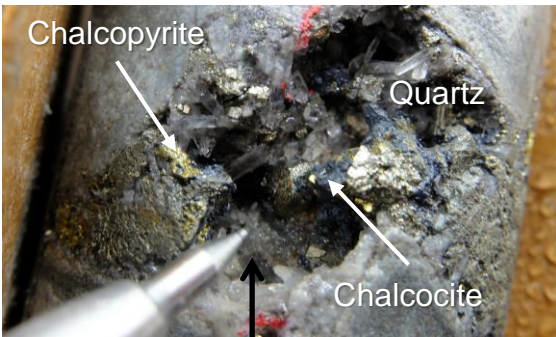
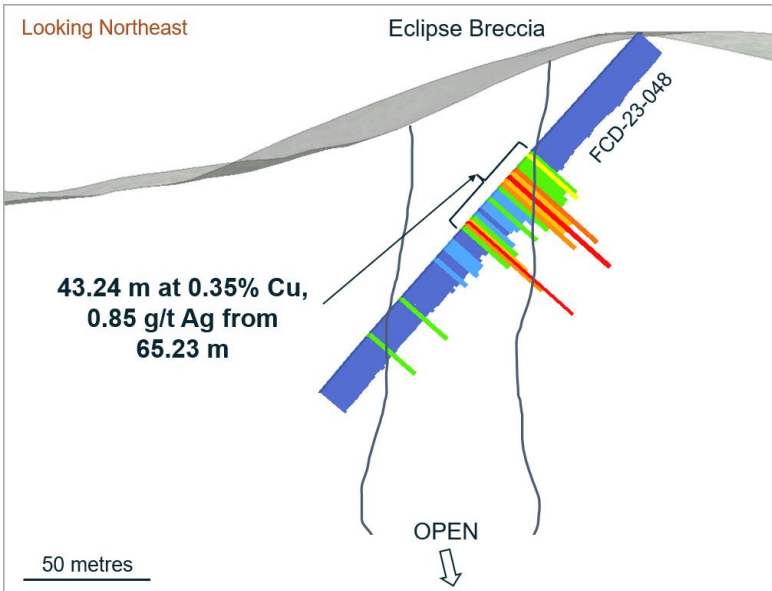
Discovery hole at previously undrilled breccia



Potential to increase open pit mineral resource with mineralization open laterally and at depth



Second breccia with near surface mineralization confirms potential at Area 51



Note: For further details refer to the Company's news releases dated January 16, 2024, March 4, 2024, and April 10, 2024.

PEA: HIGHLIGHTS



Based on 2023 MRE and 30,000 tpd Mill Throughput Scenario

51,100 tpa

Life-of-Mine Average Annual
Payable CuEq² Production

3.4 Blb

Life-of-Mine Payable
CuEq² Production

4.2 Blb

Measured and Indicated
Copper Mineral Resource^a

KEY FINANCIAL DATA

Post-tax NPV _(7%)	\$713 million
Post-tax IRR	15.6%
Post-tax Payback Period	4.1 years
Post-tax NPV _(7%) / Initial Capital Ratio	0.9:1
Initial Capital	\$798 million
Sustaining and Expansion Capital	\$1,689 million
Closure and Reclamation	\$170 million
Metal Prices	\$3.80/lb Cu, \$13.00/lb Mo, \$20/oz Ag

ANTICIPATED PRODUCTION PROFILE

Mine Life ^b	32 years
Tonnes Milled ^c	10.8 Mtpa / 30,000 tpd
Open Pit Strip Ratio (waste:ore)	1.2:1
Copper Recovery (sulphide)	94.4%

Average Annual Payable Production^{d, e}

Copper	106 Mlbs
Molybdenum	1.4 Mlbs
Silver	324.6 Koz
CuEq ²	51.1 Kt

Life-of-Mine Costs (by product)³

LOM Production Cash Costs	\$1.67/lb Cu
LOM All-in Sustaining Costs	\$1.85/lb Cu

Note: For numeric references, see the Endnotes slide.

a) The Mineral Resource Estimate was published in a news release dated May 3, 2023. For the complete MRE tables and related notes refer to the relevant slides at the end of this presentation.

b) Mine life includes active mining (Year 1 – 29) and final processing of stockpiles (Year 30 – 32)

c) Tonnes milled are exclusive of oxide and represent the average over the 32-year life of mine.

d) Average annual production considers the period of active mining during Years 1 - 29, Year 30 – 32 includes processing of stockpiles only.

e) Based on payability in concentrate of 96.5%, 95% and 98.5% for copper, silver, and molybdenum, respectively. Copper cathode payability of 98% is applied.

COPPER CREEK: MINERAL RESOURCES (2023)



Category	Tonnes (Mt)	Grade				Contained Metal			
		Cu (%)	Mo (%)	Ag (g/t)	CuEq ¹ (%)	Cu (Mlbs)	Mo (Mlbs)	Ag (Moz)	CuEq ¹ (Mlbs)
<u>Open Pit (OP)</u>									
Measured	67.2	0.48	0.008	1.2	0.51	710.5	12.5	2.6	751.1
Indicated	59.9	0.31	0.008	0.6	0.33	412.9	10.1	1.1	440.5
M&I	127.1	0.40	0.008	0.9	0.43	1,123.4	22.6	3.8	1,191.6
Inferred	48.1	0.28	0.006	0.5	0.30	298.4	6.4	0.7	316.0
<u>Underground (UG)</u>									
Measured	34.5	0.47	0.011	1.6	0.51	359.8	8.0	1.7	388.0
Indicated	260.3	0.47	0.008	1.2	0.50	2,720.6	43.9	10.0	2,876.8
M&I	294.8	0.47	0.008	1.2	0.50	3,080.4	52.0	11.8	3,264.8
Inferred	35.5	0.42	0.009	0.8	0.45	329.7	7.1	0.9	353.0
<u>Total (OP + UG)</u>									
Measured	101.6	0.48	0.009	1.3	0.51	1,070.3	20.5	4.4	1,139.1
Indicated	320.2	0.44	0.008	1.1	0.47	3,133.5	54.0	11.2	3,317.3
M&I	421.9	0.45	0.008	1.1	0.48	4,203.8	74.6	15.5	4,456.4
Inferred	83.6	0.34	0.007	0.6	0.36	628.2	13.4	1.7	669.0

Notes: Totals may not add due to rounding. The MRE for the Copper Creek project was published in a news release dated May 3, 2023. For the related notes refer to the relevant slide in the Appendix.

COPPER CREEK: NOTES TO MINERAL RESOURCES

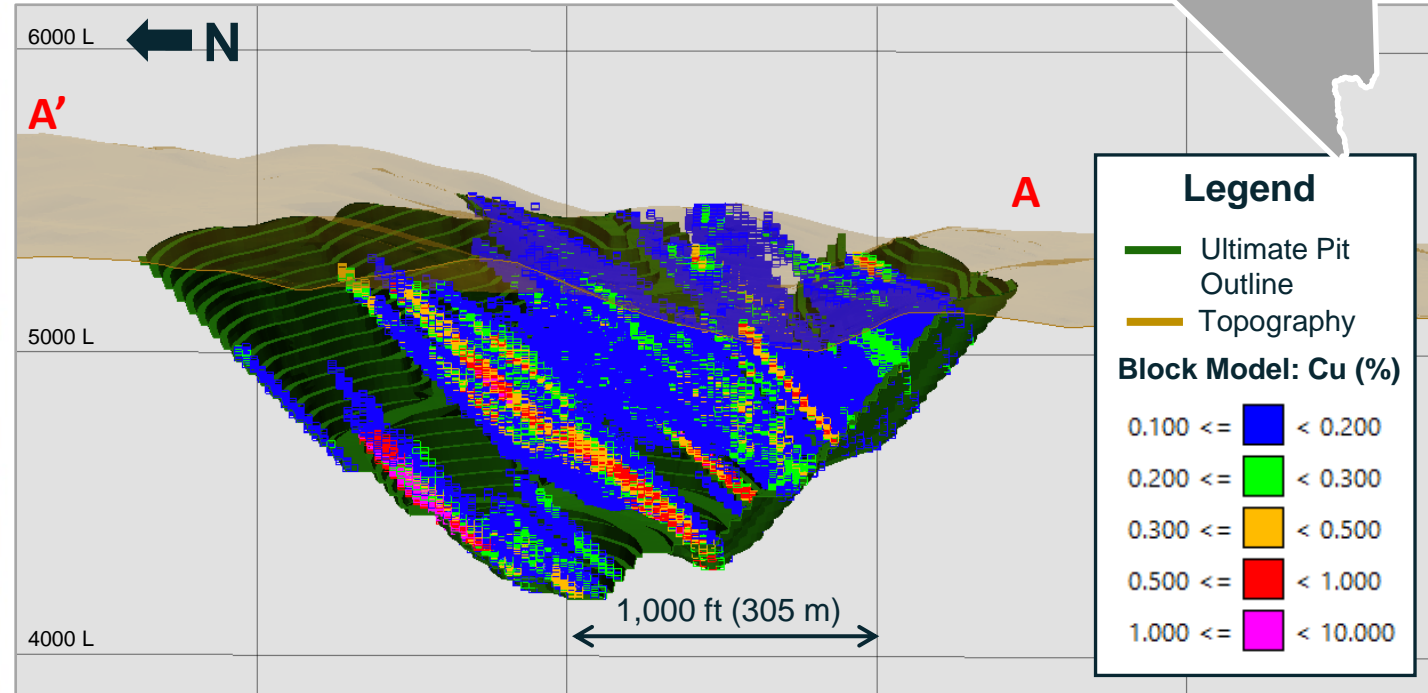
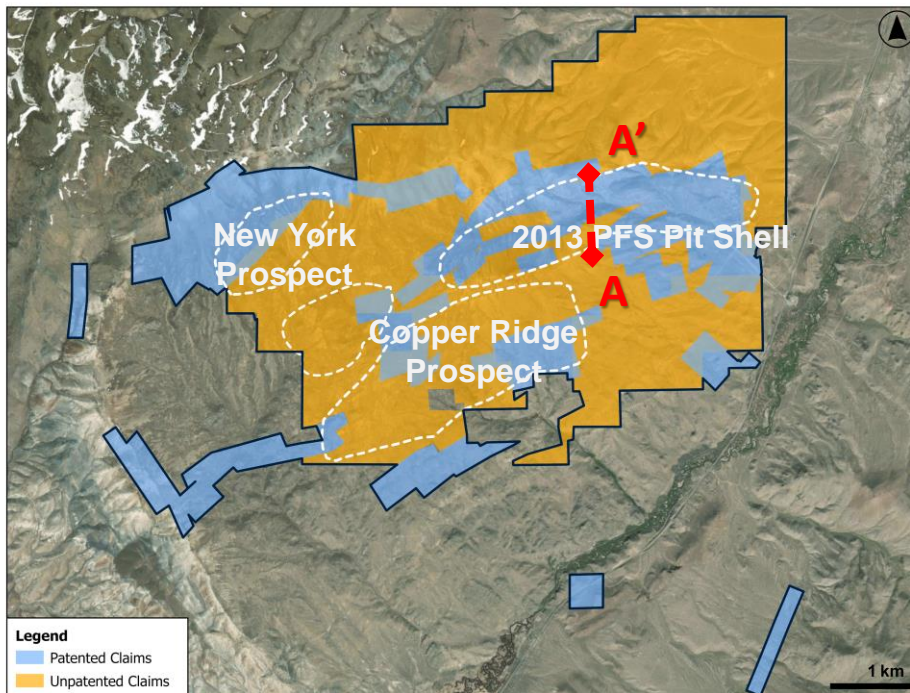


- CuEq: Copper equivalent; g/t: Grams per tonne; Mlb: Million pounds; Moz: Million troy ounces; Mt: Million tonnes
- The mineral resources in this estimate were prepared in accordance with the Canadian Institute of Mining, Metallurgy and Petroleum (CIM) Standards on Mineral Resources and Reserves, Definitions and Guidelines (CIM, 2014) prepared by the CIM Standing Committee on Reserve Definitions and adopted by CIM Council.
- Pit shell constrained resources with RPEEE are stated as contained within estimation domains defined by the following cut-off grades: 0.13% CuEq for oxide material, 0.14% CuEq for transitional material, and 0.13% CuEq for sulphide material. Pit shells are based on an assumed copper price of \$3.80/lb, assumed molybdenum price of \$13.00/lb, assumed silver price of \$20.00/troy ounce (oz), and overall slope angle of 47 degrees based on preliminary geotechnical data. Operating cost assumptions include open pit mining cost of \$2.25/t, processing cost of \$7.60/t for milling transitional and sulphide material, \$4.56/t for oxide processing, general and administrative (“G&A”) costs of \$1.00/t, and treatment charges and refining charges (“TCRC”) and freight costs dependent on product and material type.
- Underground constrained resources with RPEEE are stated as contained within estimation domains above 0.31% CuEq cut-off grade . Underground bulk mining footprints are based on an assumed copper price of \$3.80/lb, assumed molybdenum price of \$13.00/lb, assumed silver price of \$20.00/oz, underground mining cost of \$7.30/t, processing cost of \$7.60/t, G&A costs of \$1.00/t, and TCRC and freight costs of \$6.50/t. Cave footprint optimization was completed in Geovia's Footprint Finder software and applied a 700 m maximum height of draw.
- Average bulk density assigned by domain is as follows: 2.47 grams per cubic centimetre (g/cm³) for all near-surface breccias, 2.60 g/cm³ for the deeper Mammoth and Keel breccias, porphyry mineralisation, and all other areas outside of breccias.
- Preliminary variable metallurgical recovery by metal and domain are considered for CuEq as follows: copper recovery of 92%, 85%, and 60% within sulphide, transitional, and oxide material, respectively; molybdenum recovery of 78% and 68% for sulphide and transitional material, respectively; and silver recovery of 50% and 40% for sulphide and transitional material, respectively.
- Mineral Resource (MRE) copper equivalent (CuEq) values are calculated using commodity type and price, considering the relevant preliminary recovery rate based on domain. For example, sulphide CuEq = $[(\text{Cu grade}/100 * 0.92 \text{ Cu recovery} * 2,204.62 * \$3.80) + (\text{Mo grade}/100 * 0.78 \text{ Mo recovery} * 2,204.62 * \$13.00) + (\text{Ag grade} * 0.50 \text{ Ag recovery} * \$20.00/31.10348)] / (0.92 \text{ Cu recovery} * 2,204.62 * \$3.80) * 100$.
- Preliminary Economic Assessment (PEA) copper equivalent (CuEq) values are calculated using commodity type and price, considering the relevant recovery rate based on domain, applied using a regression formula as a function of grade. Recovery regression formulas are based on the outcomes of the 2023 metallurgical test work and associated recovery guidance. Metal prices used in the calculation include \$3.80/lb copper, \$13.00/lb molybdenum, \$20.00/oz silver.
- Mineral resources are not mineral reserves and do not have demonstrated economic viability. There is no certainty that all or any part of the mineral resources will be converted into mineral reserves in the future. The estimate of mineral resources may be materially affected by environmental permitting, legal, title, taxation, socio-political, marketing, or other relevant issues.
- All quantities are rounded to the appropriate number of significant figures; consequently, sums may not add up due to rounding.

CONTACT COPPER PROJECT

Drill-ready, Copper Oxide Deposit

- 100% owned, 5,900+ acres of patented and unpatented mining claims in northern Nevada
- Excellent access to a major highway, power and local mining services
- Open pit, heap-leach copper oxide opportunity
- Deposit open in all directions with untested drill targets



Notes: Conceptual resource block model section from historical data presented in a technical report titled "NI 43-101 Pre-Feasibility Study on the Contact Copper Project" prepared for International Enxco, Ltd. by Hard Rock Consulting, LLC dated and filed by International Enxco Ltd. on SEDAR on October 1, 2013.

ENDNOTES



1. Mineral Resource Estimate (“MRE”) copper equivalent values are calculated using commodity type and price, considering the relevant preliminary recovery rate based on domain. For example, sulphide CuEq = $[(\text{Cu grade}/100 * 0.92 \text{ Cu recovery} * 2,204.62 * \$3.80) + (\text{Mo grade}/100 * 0.78 \text{ Mo recovery} * 2,204.62 * \$13.00) + (\text{Ag grade} * 0.50 \text{ Ag recovery} * \$20.00/31.10348)] / (0.92 \text{ Cu recovery} * 2,204.62 * \$3.80) * 100$.
2. Preliminary Economic Assessment (“PEA”) copper equivalent (“CuEq”) values are calculated using commodity type and price, considering the relevant recovery rate based on domain, applied using a regression formula as a function of grade. Recovery regression formulas are based on the outcomes of the 2023 metallurgical test work and associated recovery guidance. Metal prices used in the calculation include \$3.80/lb copper, \$13.00/lb molybdenum, \$20.00/oz silver.
3. Production cash costs and all-in sustaining cash costs, net of by-product credits, per pound of copper or CuEq are non-IFRS financial performance measures with no standardized definition under IFRS. The Company believes these metrics are useful performance indicators based on industry standards and disclosures. Production cash costs are based on the direct operating costs, including mining, processing, and G&A, offsite charges, net of by-product credits. By-product credits are calculated using commodity prices: \$13.00 per pound of molybdenum, and \$20.00 per ounce of silver. Sustaining cash costs include sustaining capital expenditures and royalties.

Sampling Methodology, Chain of Custody, Quality Control and Quality Assurance:

All sampling was conducted under the supervision of the Company's geologists and the chain of custody from Copper Creek to the independent sample preparation facility, ALS Laboratories in Tucson, AZ, was continuously monitored. The samples were taken as ½ core, over 2 m core length. Samples were crushed, pulverized and sample pulps were analyzed using industry standard analytical methods including a 4-Acid ICP-MS multielement package and an ICP-AES method for high-grade copper samples. Gold was analyzed on a 30 g aliquot by fire assay with an ICP-AES finish. A certified reference sample was inserted every 20th sample. Coarse blanks were inserted every 20th sample. Approximately 5% of the core samples were cut into ¼ core and submitted as field duplicates. On top of internal QA-QC protocol, additional blanks, reference materials and duplicates were inserted by the analytical laboratory according to their procedure. Data verification of the analytical results included a statistical analysis of the standards and blanks that must pass certain parameters for acceptance to ensure accurate and verifiable results.



FARADAY COPPER

CONTACT INFORMATION

Suite 2800, 1055 Dunsmuir Street
PO Box 49225
Vancouver, BC Canada
www.faradaycopper.com

STACEY PAVLOVA, CFA

VP Investor Relations
778-730-1067
info@faradaycopper.com